

CORSINI STARK
architects

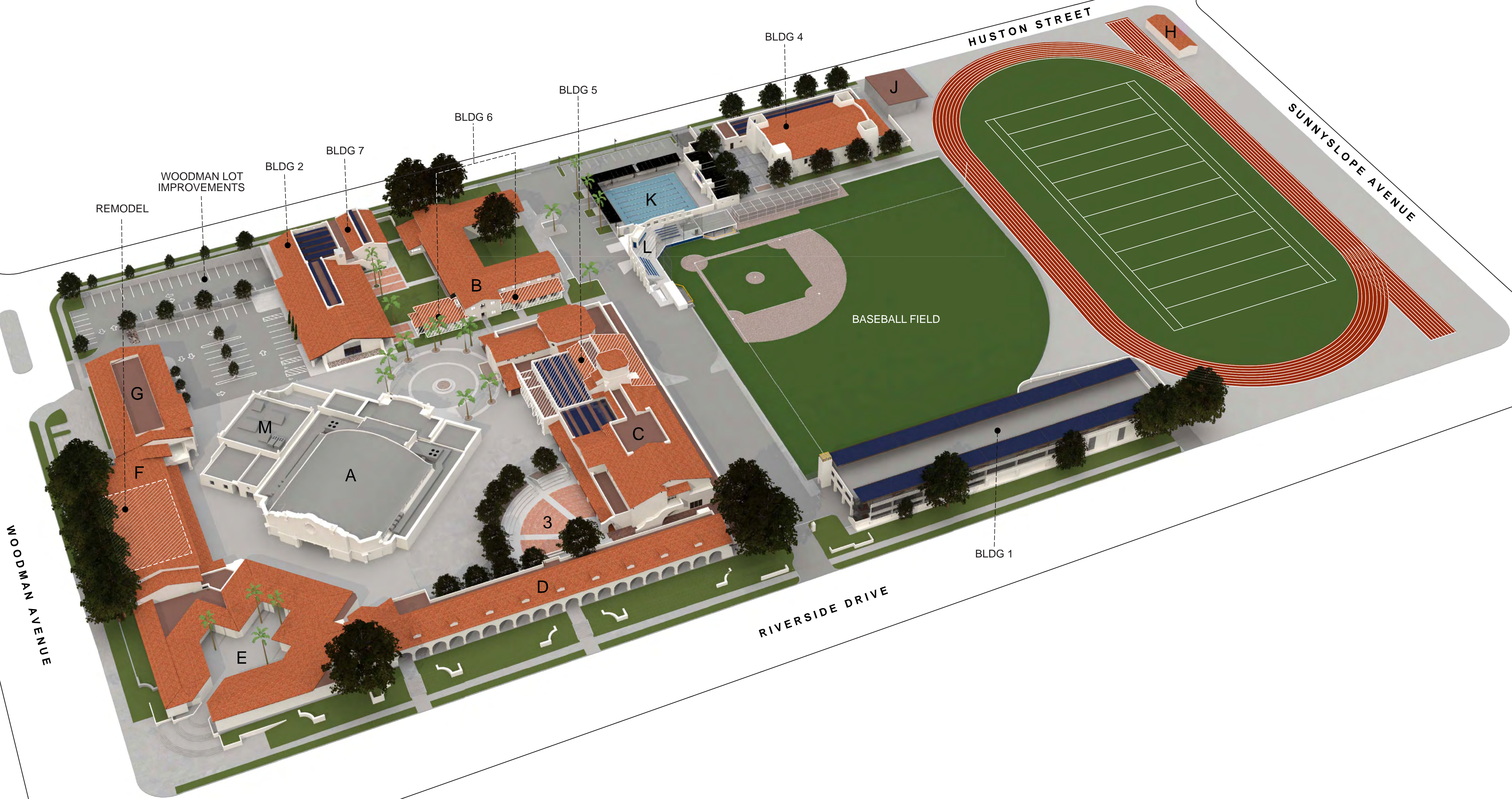
Corsini Stark Architects, LLP
3630 Tyburn Street
Los Angeles, CA 90065

t 323 255 9100
f 323 255 9105
w corsinistark.com

All ideas, designs, arrangements, and plans indicated or represented by these drawings are owned by and are the property of Corsini Stark Architects, LLP and were created, developed, and designed for use on, and in connection with the specified project. None of such ideas, designs, arrangements, or plans shall be used by or disclosed to any person, firm, or corporation, without the written permission of Corsini Stark Architects, LLP.

PROFESSIONAL SEAL:

ARCHITECT:
CORSINI STARK ARCHITECTS
3630 TYBURN STREET
LOS ANGELES, CA 90065
P: 323.255.9100
CONTACT: ANTHONY STARK, RA



#	SUBMISSIONS / REVISIONS	DATE

PROJECT TITLE:
**NOTRE DAME HIGH SCHOOL
CAMPUS PLAN**

13645 RIVERSIDE DRIVE
SHERMAN OAKS, CA 91423

DRAWING TITLE:
**ILLUSTRATIVE CAMPUS
PLAN**

DRAWING NUMBER:
A 1.01



BUILDING 1_PARKING STRUCTURE VIEW FROM SOUTH 1



PROJECT 3_PLAZA IMPROVEMENT VIEW FROM SOUTH 2

CORSINI STARK
architects

Corsini Stark Architects, LLP
3630 Tyburn Street
Los Angeles, CA 90065

t 323 255 9100
f 323 255 9105
w corsinistark.com

All Plans, Designs, Arrangements, and Plans Indicated or Represented for these Drawings are owned by and are the property of Corsini Stark Architects, LLP and are created, scaled, and developed for use on, and in connection with the specified project. None of such Plans, Designs, Arrangements, or Plans shall be used by or disclosed to any person, firm, or corporation, without the written permission of Corsini Stark Architects, LLP.

PROFESSIONAL SEAL:

ARCHITECT:
CORSINI STARK ARCHITECTS
3630 TYBURN STREET
LOS ANGELES, CA 90065
P: 323.255.9100
CONTACT: ANTHONY STARK, RA

#	SUBMISSIONS / REVISIONS	DATE

PROJECT TITLE:
NOTRE DAME HIGH SCHOOL
CAMPUS PLAN

13645 RIVERSIDE DRIVE
SHERMAN OAKS, CA 91423

DRAWING TITLE:
RENDERINGS OF BLDG 1 &
PROJECT 3

DRAWING NUMBER:

A 1.1

PROJECT 17.002.00



BUILDING 2_CONFERENCE CENTER/CAFETERIA VIEW FROM SOUTH WEST 1



BUILDING 2 & 6_PLAZA IMPROVEMENT VIEW FROM NORTH 2

CORSINI STARK
architects

Corsini Stark Architects, LLP
3630 Tyburn Street
Los Angeles, CA 90065

t 323 255 9100
f 323 255 9105
w corsinistark.com

All files, designs, arrangements, and items indicated or represented by these drawings are owned by and are the property of Corsini Stark Architects, LLP and were created, executed, and developed for use on, and in connection with the specified project. None of such files, designs, arrangements, or items shall be used by or disclosed to any person, firm, or corporation, without the written permission of Corsini Stark Architects, LLP.

PROFESSIONAL SEAL:

ARCHITECT:
CORSINI STARK ARCHITECTS
3630 TYBURN STREET
LOS ANGELES, CA 90065
P: 323.255.9100
CONTACT: ANTHONY STARK, RA

#	SUBMISSIONS / REVISIONS	DATE

PROJECT TITLE:
NOTRE DAME HIGH SCHOOL
CAMPUS PLAN

13645 RIVERSIDE DRIVE
SHERMAN OAKS, CA 91423

DRAWING TITLE:
RENDERINGS OF BLDG 2 &
BLDG 6

DRAWING NUMBER:

A 1.2

PROJECT 17.002.00



BUILDING 2_CONFERENCE CENTER/CAFETERIA VIEW FROM SOUTH WEST 1



BUILDING 5_BURNS BUILDING ADDITION/THEATER VIEW FROM WEST 2

CORSINI STARK
architects

Corsini Stark Architects, LLP
3630 Tyburn Street
Los Angeles, CA 90065

t 323 255 9100
f 323 255 9105
w corsinistark.com

All ideas, designs, arrangements, and plans indicated or represented by these drawings are owned by and are the property of Corsini Stark Architects, LLP and were created, worked, and developed for use on, and in connection with the specified project. None of such ideas, designs, arrangements, or plans shall be used by or disclosed to any person, firm, or corporation, without the written permission of Corsini Stark Architects, LLP.

PROFESSIONAL SEAL:

ARCHITECT:
CORSINI STARK ARCHITECTS
3630 TYBURN STREET
LOS ANGELES, CA 90065
P: 323.255.9100
CONTACT: ANTHONY STARK, RA

#	SUBMISSIONS / REVISIONS	DATE

PROJECT TITLE:
**NOTRE DAME HIGH SCHOOL
CAMPUS PLAN**

13645 RIVERSIDE DRIVE
SHERMAN OAKS, CA 91423

DRAWING TITLE:
**RENDERINGS OF BLDG 4 &
BLDG 5**

DRAWING NUMBER:
A 1.3

PROJECT 17.002.00

All ideas, designs, arrangements, and plans indicated or represented by these drawings are owned by and are the property of Corsini Stark Architects, LLP and were created, evolved, and developed for use in, and in connection with the specified project. None of such ideas, designs, arrangements, or plans shall be used by or disclosed to any person, firm, or corporation, without the written permission of Corsini Stark Architects, LLP.

PROFESSIONAL SEAL:

ARCHITECT:
CORSINI STARK ARCHITECTS
3630 TYBURN STREET
LOS ANGELES, CA 90065
P: 323.255.9100
CONTACT: ANTHONY STARK, RA

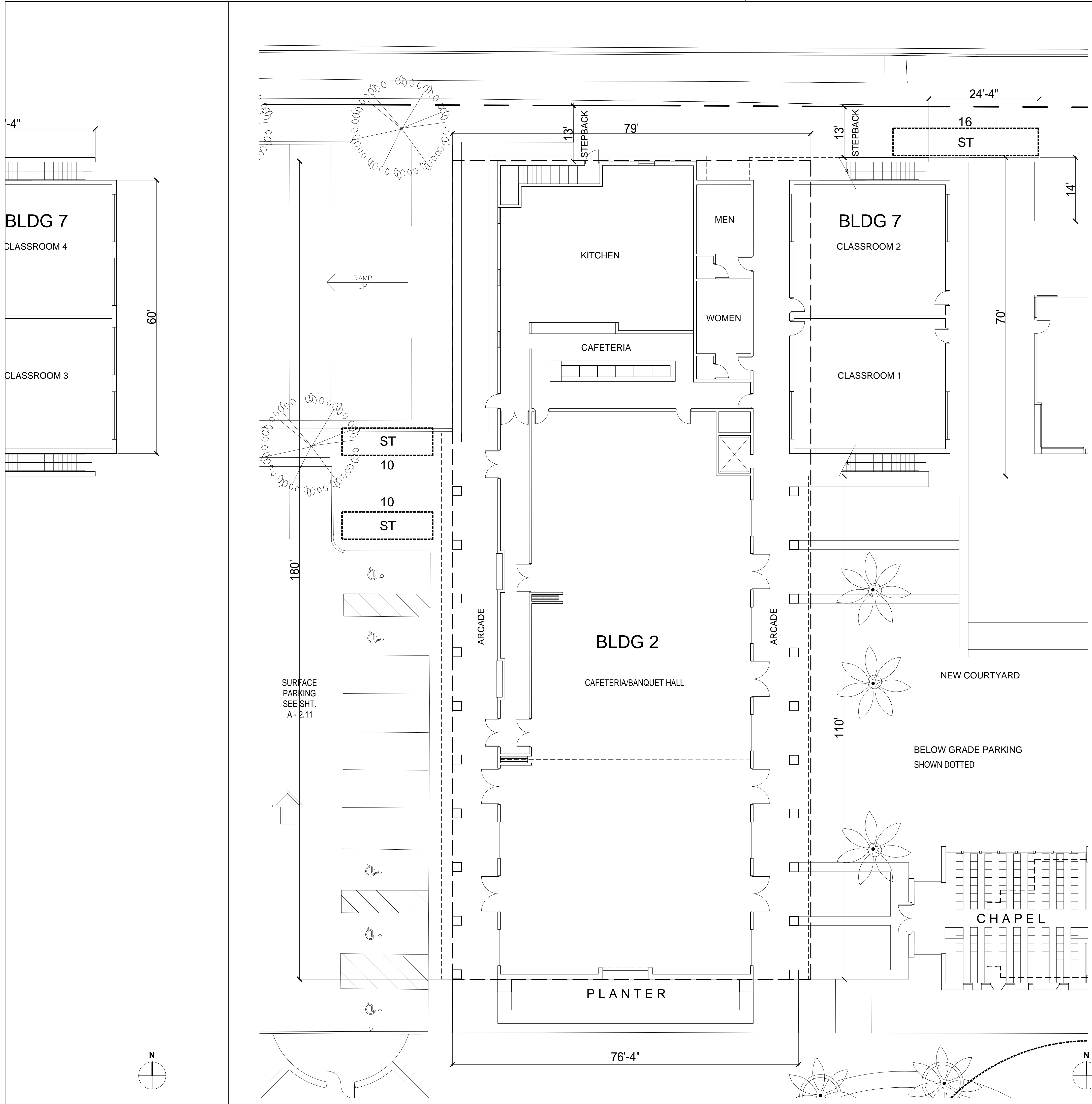
#	SUBMISSIONS / REVISIONS	DATE

PROJECT TITLE :
**NOTRE DAME HIGH SCHOOL
CAMPUS PLAN**

13645 RIVERSIDE DRIVE
SHERMAN OAKS, CA 91423

DRAWING TITLE :
**CAFETERIA/BANQUET HALL &
FUTURE CLASSROOM BLDG PLANS**

DRAWING NUMBER :
A 2.10



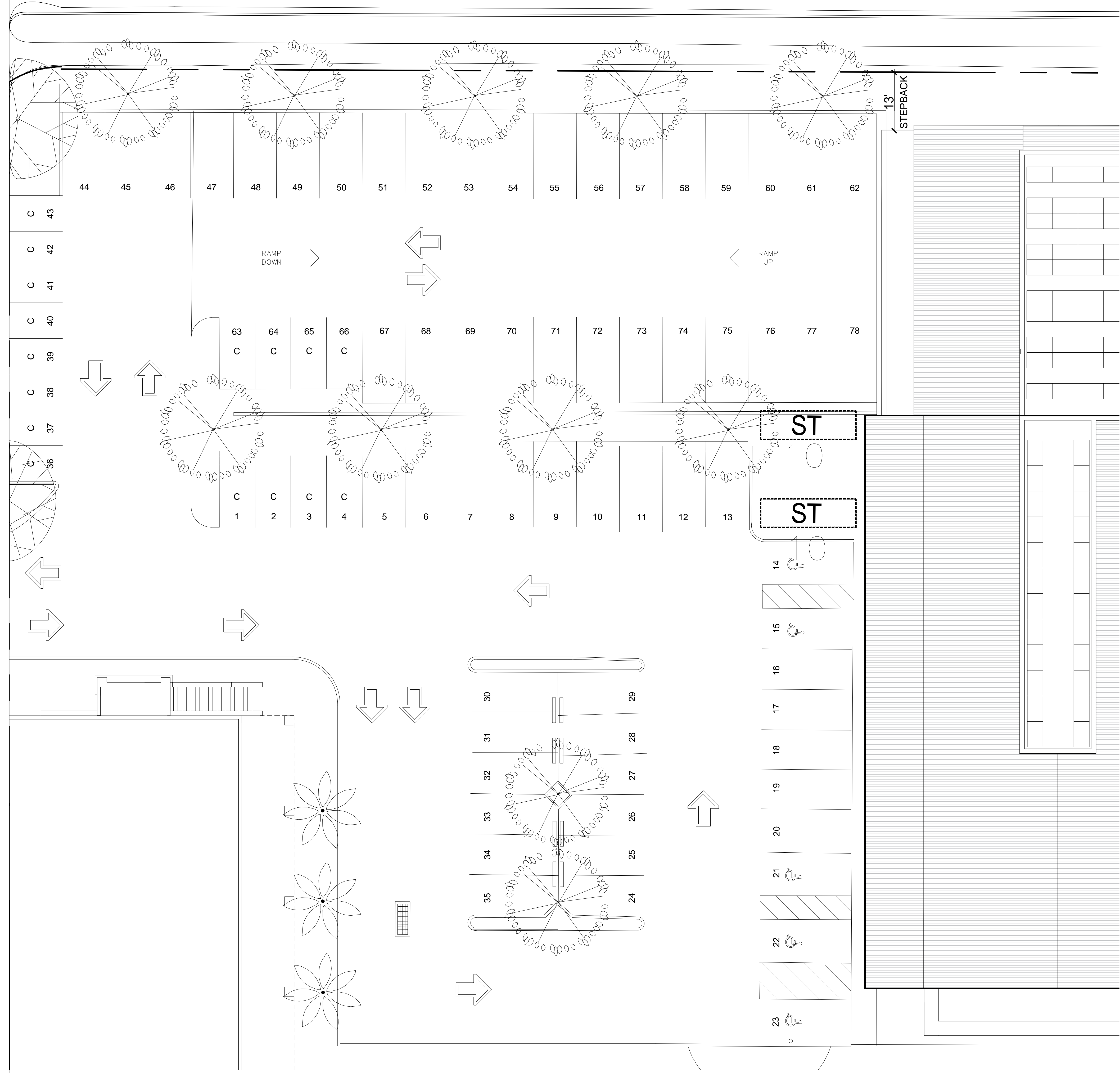
BUILDING FIRST LEVEL PLAN

SCALE: 3/32" = 1'-0" **2**

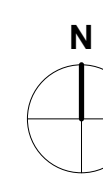
BLDG. 2&7 CAFETERIA/BANQUET HALL & FUTURE CLASSROOM BLDG GROUND LEVEL PLAN

SCALE: 3/32" = 1'-0" **1**

H U S T O N S T R E E T



NOTE:
SURFACE PARKING LOT TO CONFORM TO
L.A. LANDSCAPE ORDINANCE



WOODMAN LOT PARKING PLAN

SCALE:
3/32" = 1'-0"

1

CORSINI STARK
architects

Corsini Stark Architects, LLP
3630 Tyburn Street
Los Angeles, CA 90065

t 323 255 9100
f 323 255 9105
w corsinistark.com

All ideas, designs, arrangements, and plans indicated or represented by these drawings are owned by and are the property of Corsini Stark Architects, LLP and were created, evolved, and developed for use in, and in connection with the specified project. None of such ideas, designs, arrangements, or plans shall be used by or disclosed to any person, firm, or corporation, without the written permission of Corsini Stark Architects, LLP.

PROFESSIONAL SEAL:

ARCHITECT:
CORSINI STARK ARCHITECTS
3630 TYBURN STREET
LOS ANGELES, CA 90065
P: 323.255.9100
CONTACT: ANTHONY STARK, RA

#	SUBMISSIONS / REVISIONS	DATE

PROJECT TITLE:
**NOTRE DAME HIGH SCHOOL
CAMPUS PLAN**

13645 RIVERSIDE DRIVE
SHERMAN OAKS, CA 91423

DRAWING TITLE:
WOODMAN LOT PARKING PLAN

DRAWING NUMBER:
A 2.11

PROJECT 17.002.00

PROFESSIONAL SEAL:

ARCHITECT:
 CORSINI STARK ARCHITECTS
 3630 TYBURN STREET
 LOS ANGELES, CA 90065
 P: 323.255.9100
 CONTACT: ANTHONY STARK, RA

#	SUBMISSIONS / REVISIONS	DATE

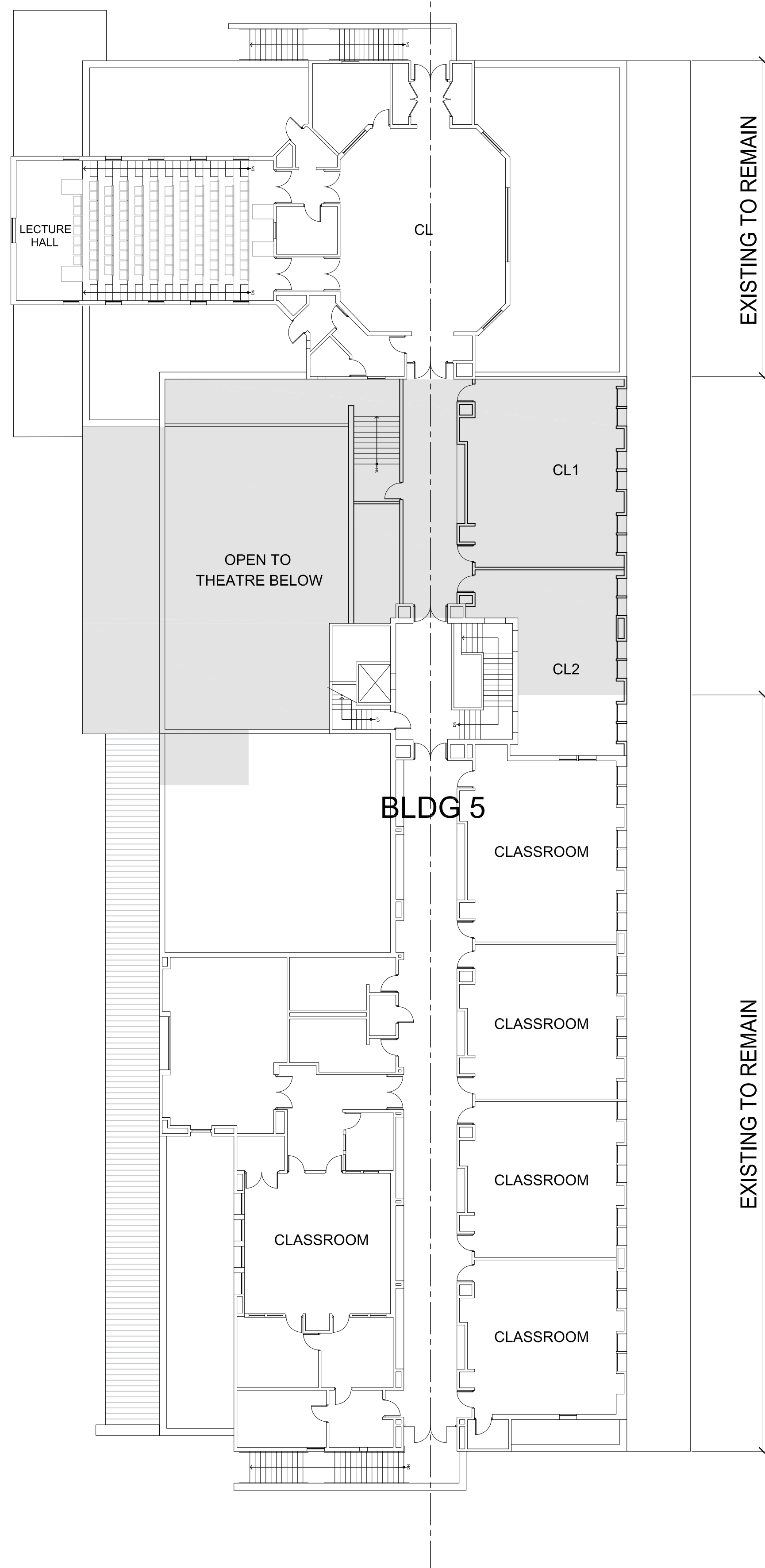
PROJECT TITLE:
 NOTRE DAME HIGH SCHOOL
 CAMPUS PLAN

13645 RIVERSIDE DRIVE
 SHERMAN OAKS, CA 91423

DRAWING TITLE:
 BURNS BUILDING
 ADDITION/THEATRE PLANS

DRAWING NUMBER:

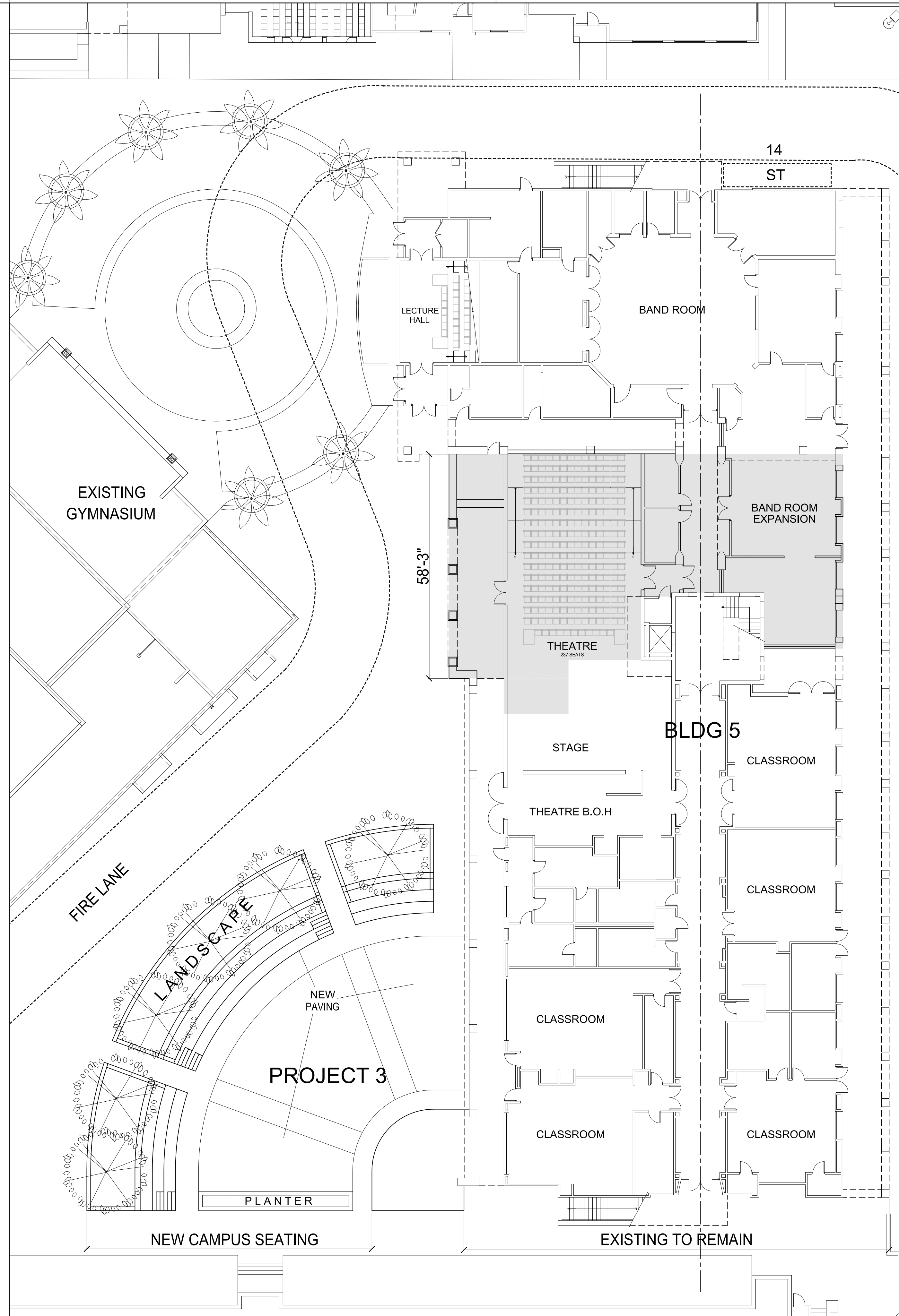
A 2.30



AREA OF ADDITION

BLDG.5 BURNS BUILDING ADDITION/THEATRE FIRST LEVEL PLAN

SCALE: 1/16" = 1'-0" 2



AREA OF ADDITION

BLDG.5 BURNS BUILDING ADDITION/THEATRE GROUND LEVEL PLAN

SCALE: 1/16" = 1'-0" 1

H U S T O N S T R E E T

CORSINI STARK
architects

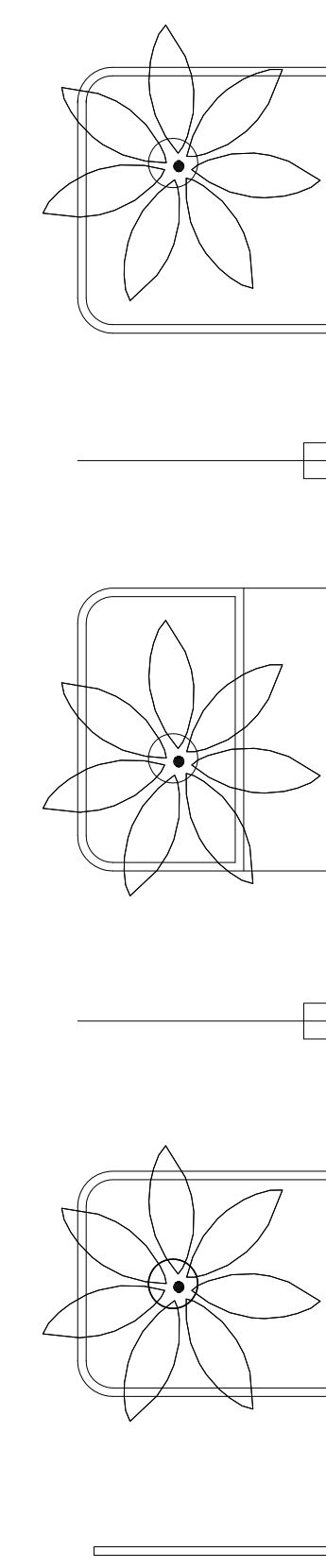
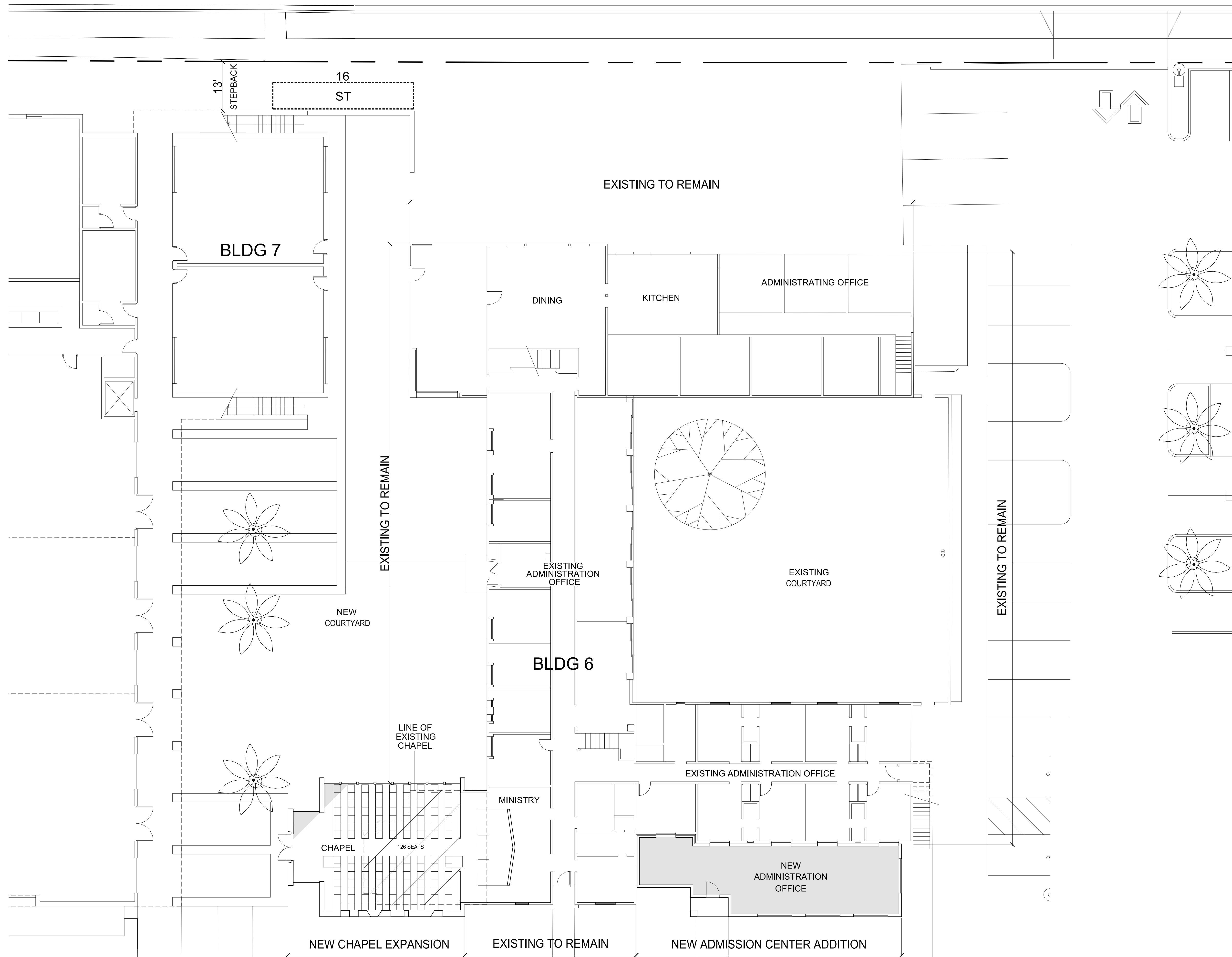
Corsini Stark Architects, LLP
3630 Tyburn Street
Los Angeles, CA 90065

t 323 255 9100
f 323 255 9105
w corsinistark.com

All ideas, designs, arrangements, and plans indicated or recommended by these drawings are owned by and are the property of Corsini Stark Architects, LLP and were created, evolved, and developed for use on, and in connection with the specified project. None of such ideas, designs, arrangements, or plans shall be used by or disclosed to any person, firm, or corporation, without the written permission of Corsini Stark Architects, LLP.

PROFESSIONAL SEAL:

ARCHITECT:
CORSINI STARK ARCHITECTS
3630 TYBURN STREET
LOS ANGELES, CA 90065
P: 323.255.9100
CONTACT: ANTHONY STARK, RA



#	SUBMISSIONS / REVISIONS	DATE

PROJECT TITLE:
**NOTRE DAME HIGH SCHOOL
CAMPUS PLAN**

13645 RIVERSIDE DRIVE
SHERMAN OAKS, CA 91423

DRAWING TITLE:
**HOLY CROSS CENTER ADDITION
PLANS**

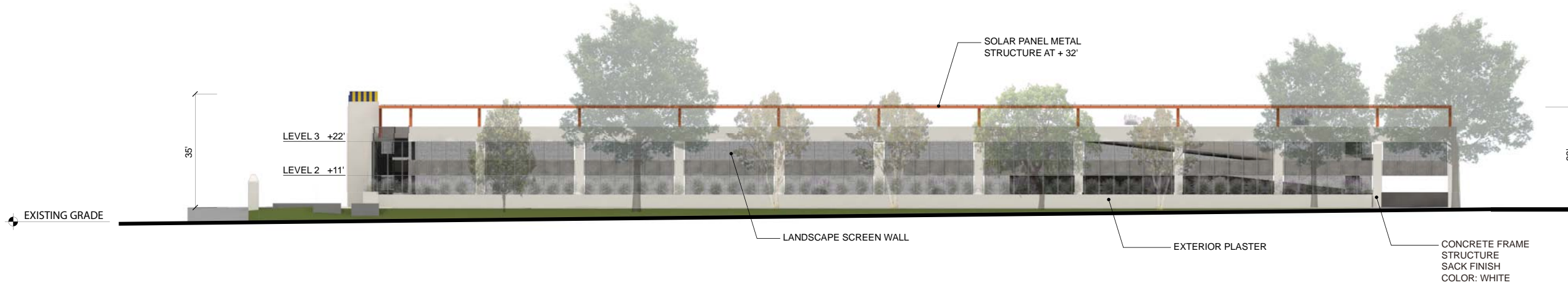
DRAWING NUMBER:
A 2.40

AREA OF ADDITION

All lines, designs, arrangements, and ideas indicated or represented by these drawings are owned by and are the property of Corini Stark Architects, LLP and were created, drafted, and developed for use on, and in connection with the specified project. None of such lines, designs, arrangements, or ideas shall be used by or disclosed to any person, firm, or corporation, without the written permission of Corini Stark Architects, LLP.

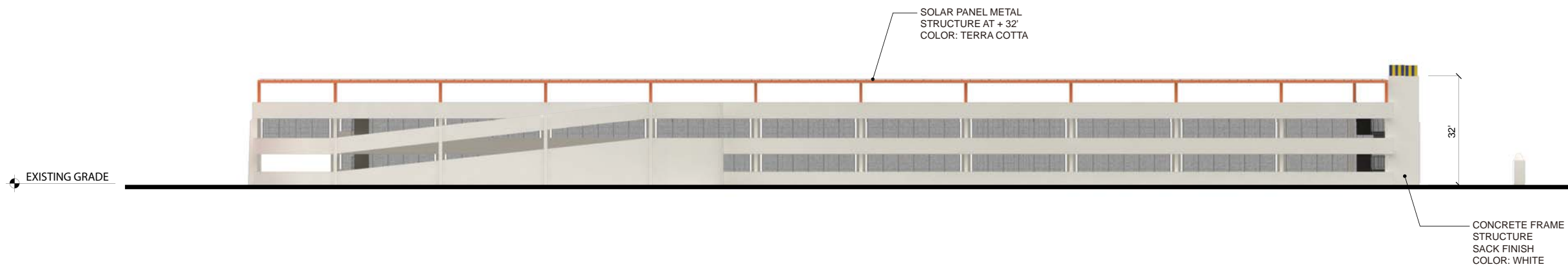
PROFESSIONAL SEAL:

ARCHITECT:
CORSINI STARK ARCHITECTS
3630 TYBURN STREET
LOS ANGELES, CA 90065
P: 323.255.9100
CONTACT: ANTHONY STARK, RA



SOUTH ELEVATION

SCALE:
1/16"=1' 1



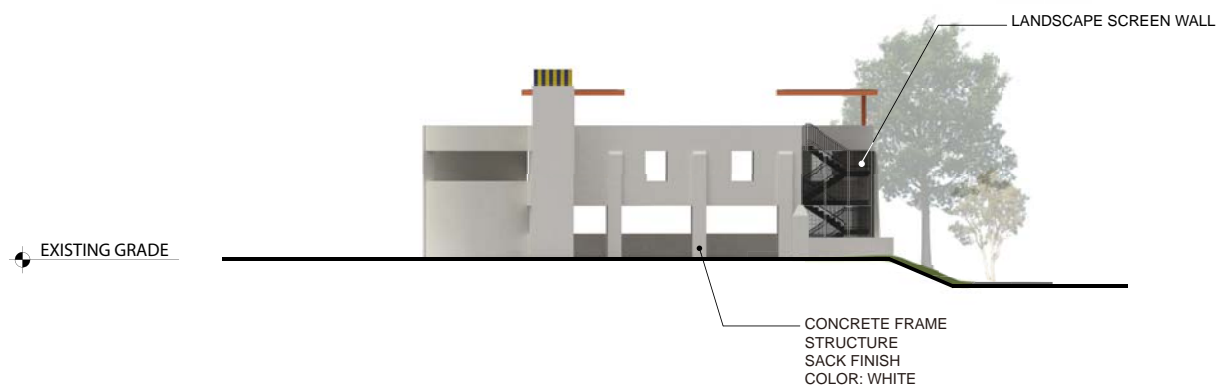
NORTH ELEVATION

SCALE:
1/16"=1' 2



EAST ELEVATION

SCALE:
1/16"=1' 3



WEST ELEVATION

SCALE:
1/16"=1' 4

#	SUBMISSIONS / REVISIONS	DATE

PROJECT TITLE:
NOTRE DAME HIGH SCHOOL
CAMPUS PLAN

13645 RIVERSIDE DRIVE
SHERMAN OAKS, CA 91423

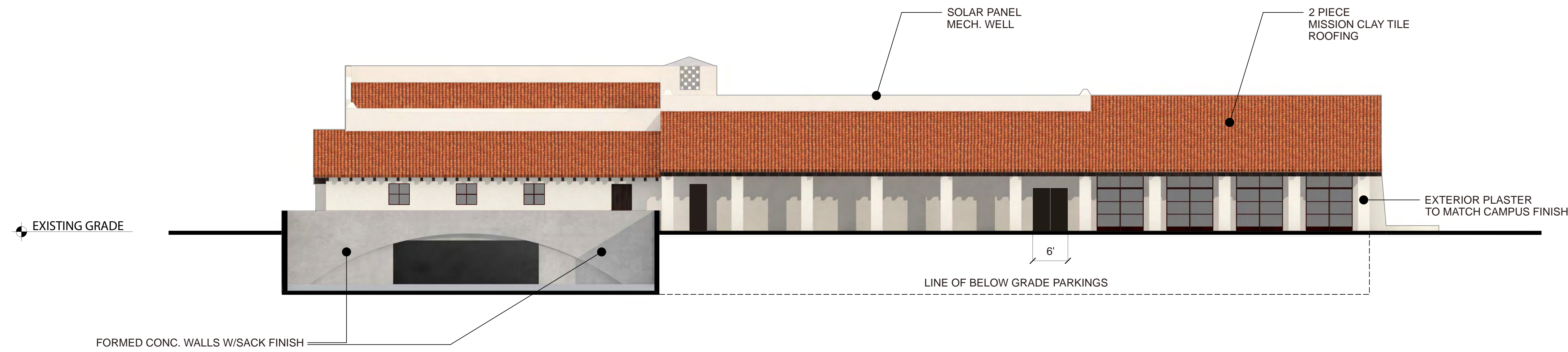
DRAWING TITLE:
RIVERSIDE PARKING STRUCTURE
ELEVATIONS

DRAWING NUMBER:
A 3.01

PROJECT 17.002.00

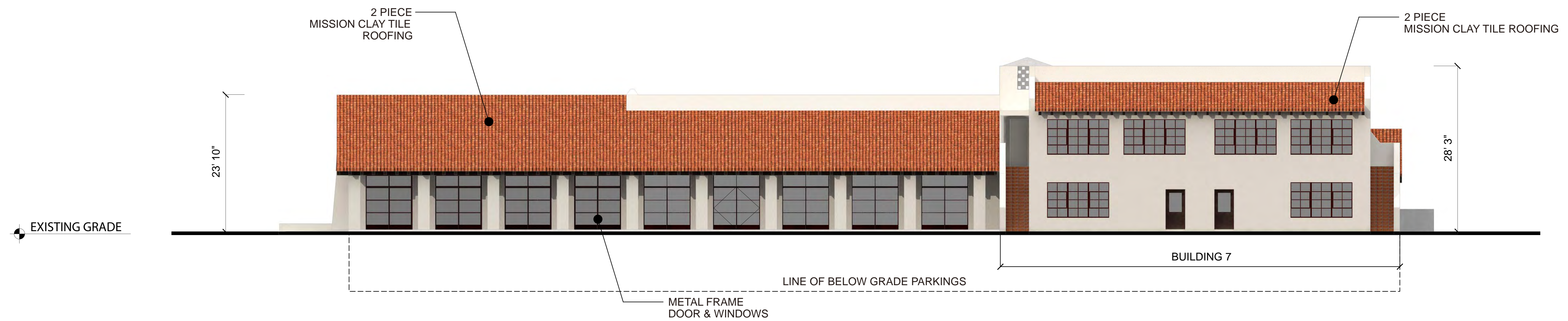
PROFESSIONAL SEAL:

ARCHITECT:
CORSINI STARK ARCHITECTS
3630 TYBURN STREET
LOS ANGELES, CA 90065
P: 323.255.9100
CONTACT: ANTHONY STARK, RA



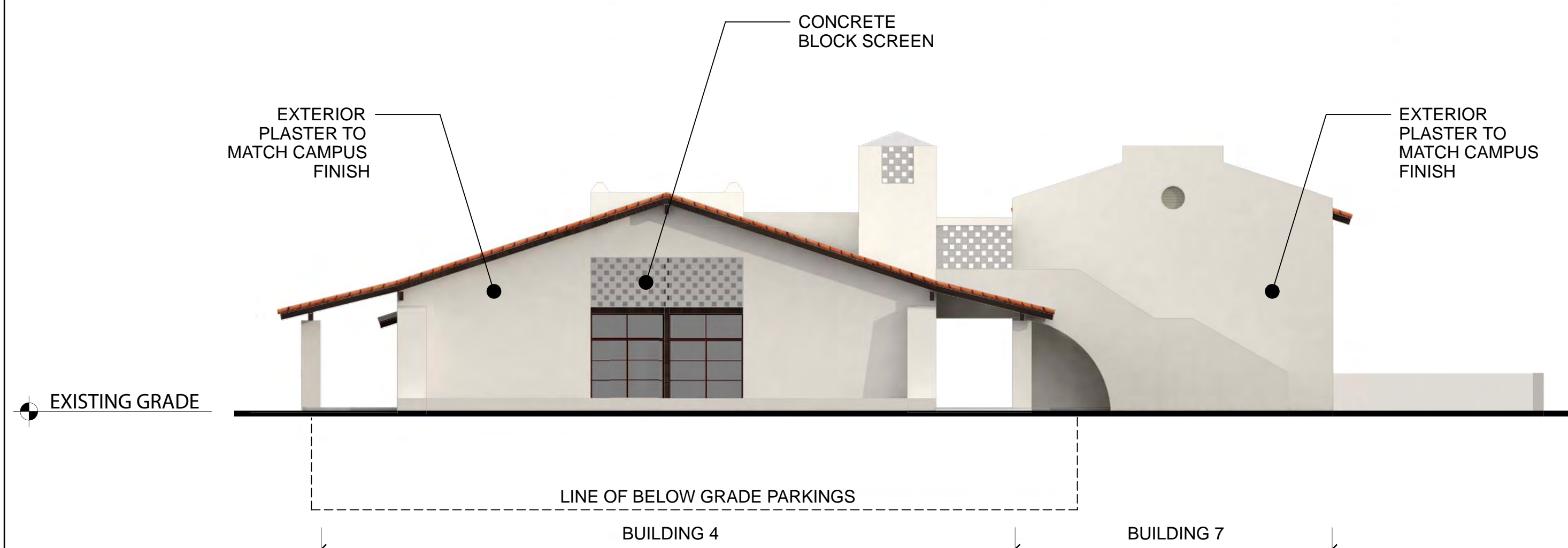
BUILDING 4 WEST ELEVATION

SCALE:
3/32"=1' 1



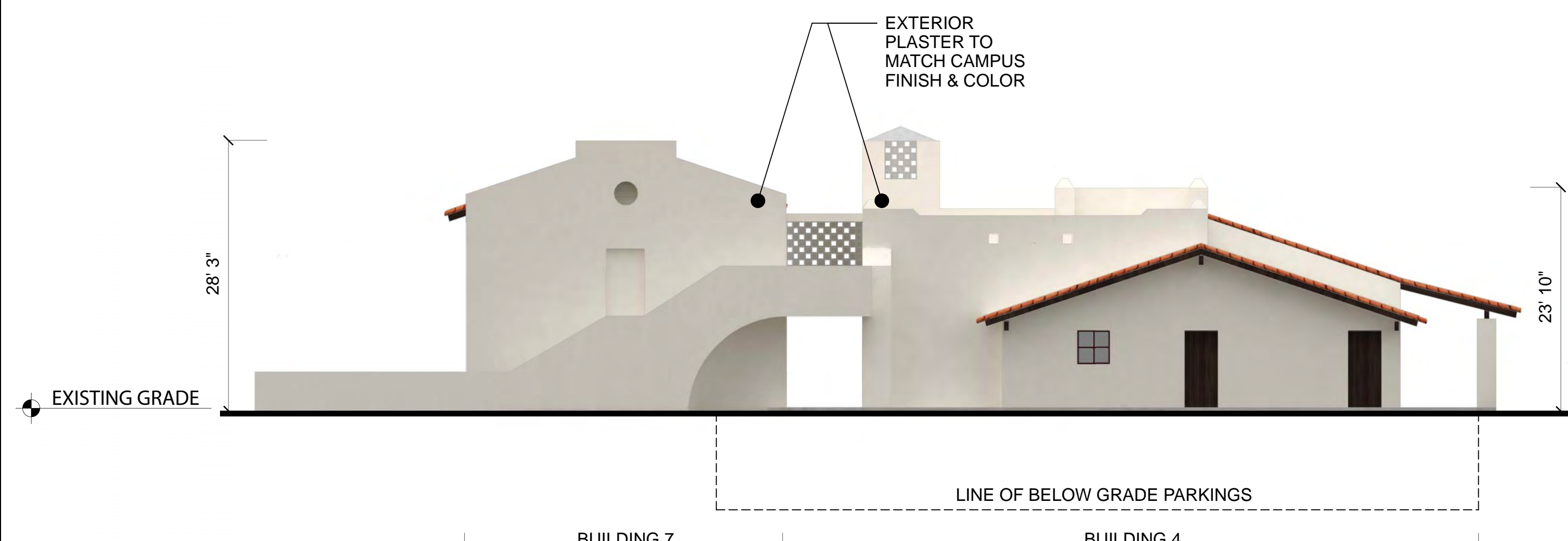
EAST ELEVATION

SCALE:
3/32"=1' 2



SOUTH ELEVATION

SCALE:
3/32"=1' 3



NORTH ELEVATION

SCALE:
3/32"=1' 4

#	SUBMISSIONS / REVISIONS	DATE

PROJECT TITLE:
NOTRE DAME HIGH SCHOOL
CAMPUS PLAN

13645 RIVERSIDE DRIVE
SHERMAN OAKS, CA 91423

DRAWING TITLE:
CONFERENCE CENTER/CAFETERIA
& FUTURE CLASSROOM BLDG
ELEVATIONS

DRAWING NUMBER :

A 3.02

PROJECT 17.002.00



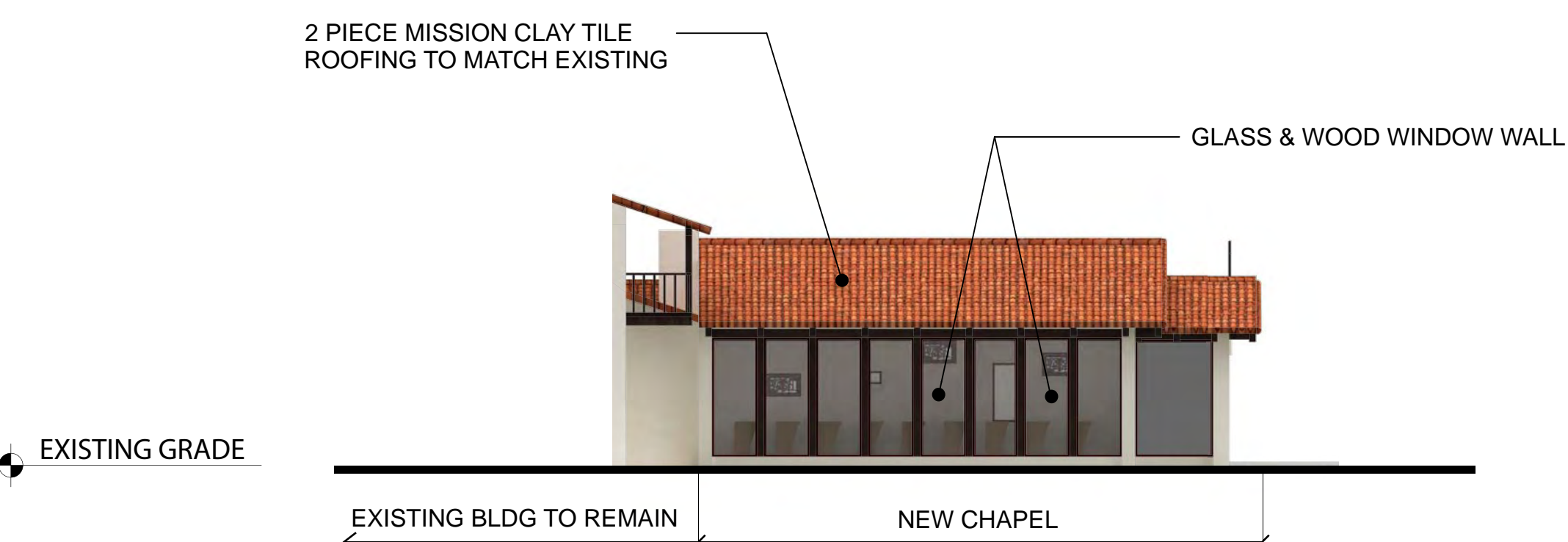
SOUTH ELEVATION

SCALE: 3/32"=1' 1



WEST ELEVATION

SCALE: 3/32"=1' 2



NORTH ELEVATION

SCALE: 3/32"=1' 3

#	SUBMISSIONS / REVISIONS	DATE

PROJECT TITLE:
NOTRE DAME HIGH SCHOOL
CAMPUS PLAN

13645 RIVERSIDE DRIVE
SHERMAN OAKS, CA 91423

DRAWING TITLE:
BLDG 6
HOLY CROSS CENTER
ADDITION ELEVATIONS

DRAWING NUMBER:

A 3.03

PROJECT 17.002.00

All ideas, designs, arrangements, and plans indicated or represented by these drawings are owned by and are the property of Corsini Stark Architects, LLP and were created, evolved, and developed for use on, and in connection with the specified project. None of such ideas, designs, arrangements, or plans shall be used by or disclosed to any person, firm, or corporation, without the written permission of Corsini Stark Architects, LLP.

PROFESSIONAL SEAL:

ARCHITECT:
CORSINI STARK ARCHITECTS
3630 TYBURN STREET
LOS ANGELES, CA 90065
P: 323.255.9100
CONTACT: ANTHONY STARK, RA

#	SUBMISSIONS / REVISIONS	DATE

PROJECT TITLE:
NOTRE DAME HIGH SCHOOL
CAMPUS PLAN

13645 RIVERSIDE DRIVE
SHERMAN OAKS, CA 91423

DRAWING TITLE:
BURNS BUILDING
ADDITION/THEATRE
ELEVATIONS

DRAWING NUMBER:
A 3.04

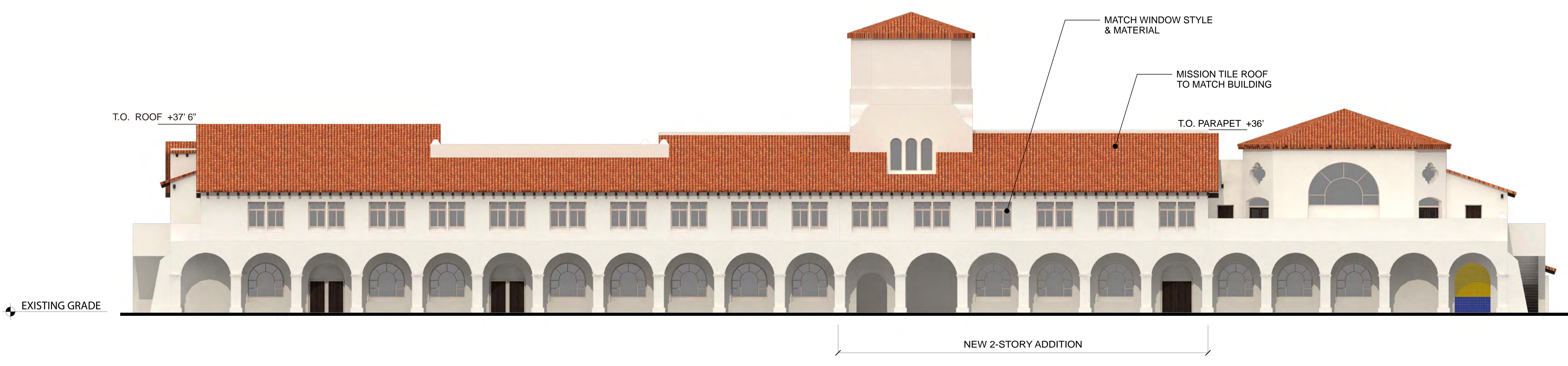
PROJECT 17.002.00



WEST ELEVATION

SCALE:
3/32"=1'

1



EAST ELEVATION

SCALE:
3/32"=1'

2

All ideas, designs, arrangements, and plans indicated or represented by these drawings are owned by and are the property of Corsini Stark Architects, LLP and were created, studied, and developed for use on, and in connection with the specified project. None of such ideas, designs, arrangements, or plans shall be used by or disclosed to any person, firm, or corporation, without the written permission of Corsini Stark Architects, LLP.

PROFESSIONAL SEAL:

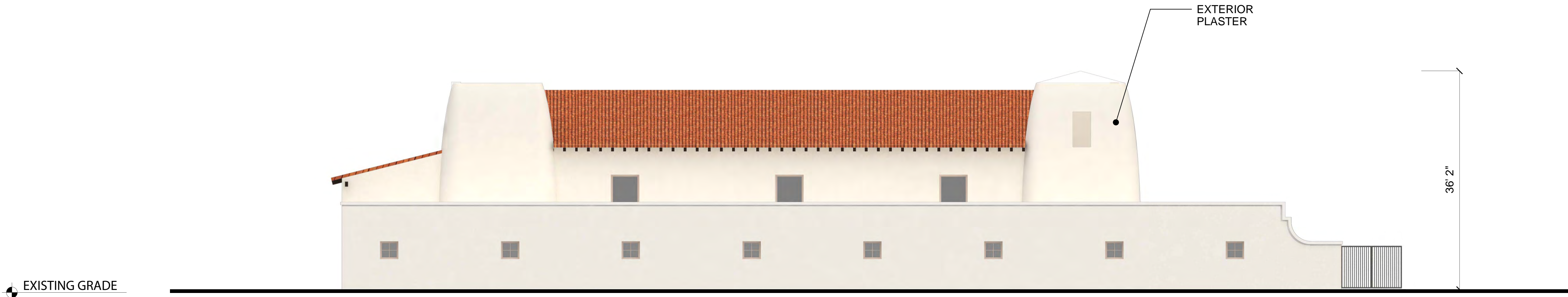
ARCHITECT:
CORSINI STARK ARCHITECTS
3630 TYBURN STREET
LOS ANGELES, CA 90065
P-323.255.9100
CONTACT: ANTHONY STARK, RA



SOUTH ELEVATION

SCALE:
3/32"=1'

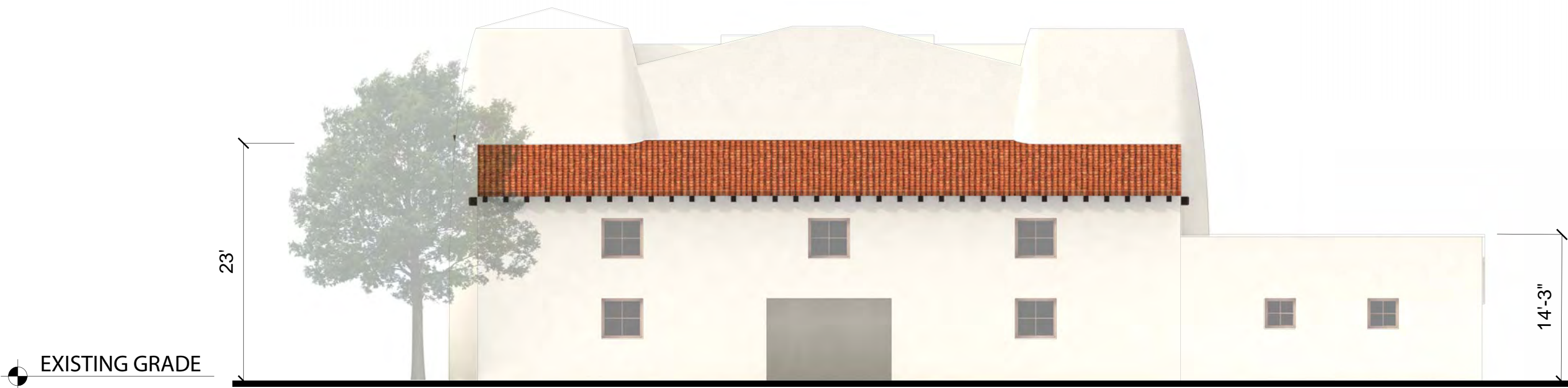
1



NORTH ELEVATION

SCALE:
3/32"=1'

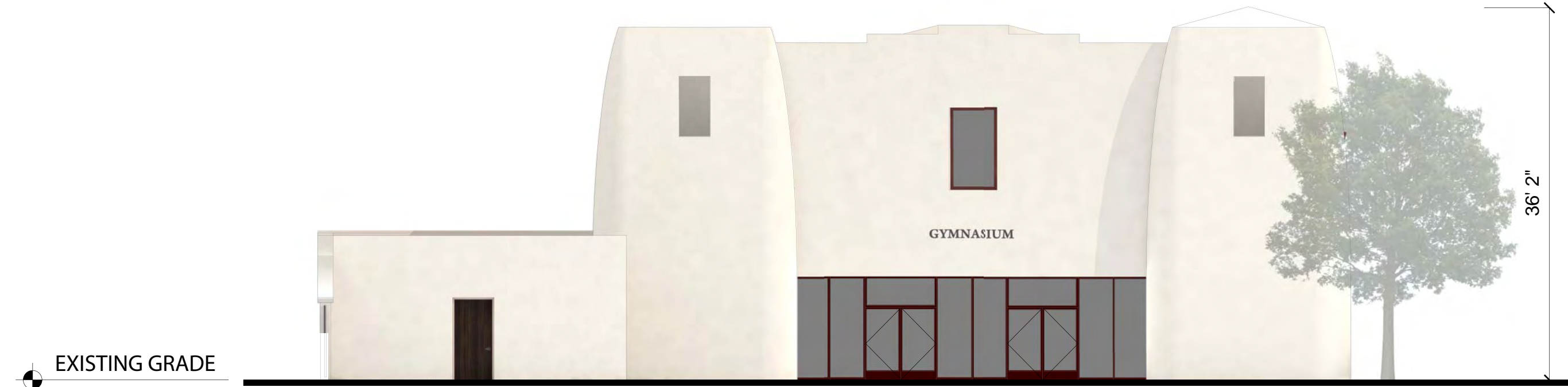
2



EAST ELEVATION

SCALE:
3/32"=1'

3



WEST ELEVATION

SCALE:
3/32"=1'

4

#	SUBMISSIONS / REVISIONS	DATE

PROJECT TITLE:
NOTRE DAME HIGH SCHOOL
CAMPUS PLAN

13645 RIVERSIDE DRIVE
SHERMAN OAKS, CA 91423

DRAWING TITLE:
PRACTICE GYMNASIUM
ELEVATIONS

DRAWING NUMBER:
A 3.05

PROJECT 17.002.00

PROFESSIONAL SEAL:

ARCHITECT:
CORSINI STARK ARCHITECTS
3630 TYBURN STREET
LOS ANGELES, CA 90065
P: 323.255.9100
CONTACT: ANTHONY STARK, RA

#	SUBMISSIONS / REVISIONS	DATE

PROJECT TITLE:
**NOTRE DAME HIGH SCHOOL
CAMPUS PLAN**

13645 RIVERSIDE DRIVE
SHERMAN OAKS, CA 91423

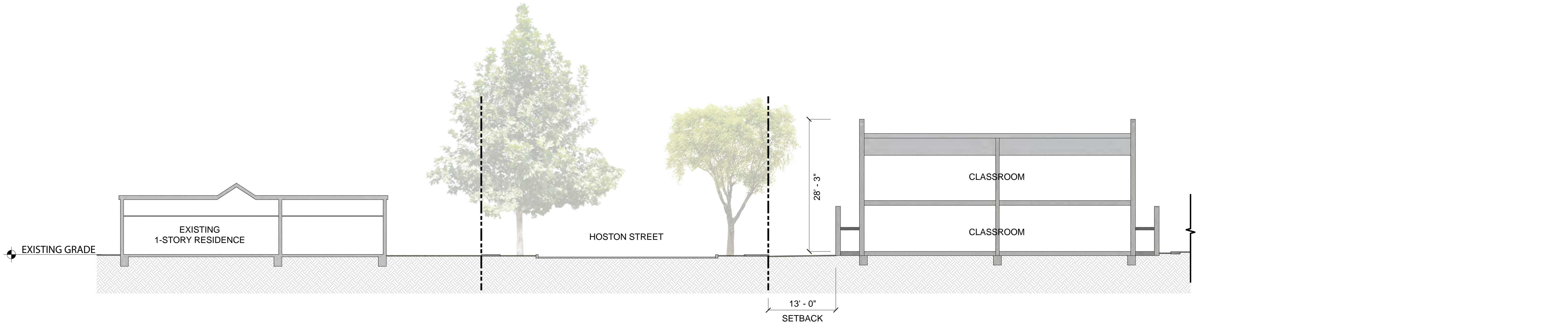
DRAWING TITLE:
SECTIONS

DRAWING NUMBER:
A 4.01

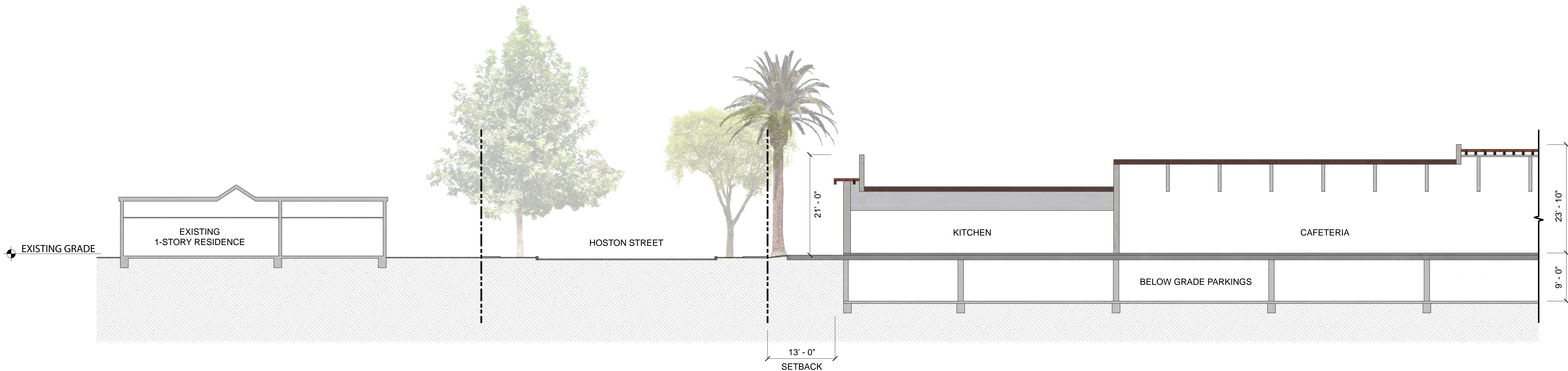
PROJECT 17.002.00



BLDG 4. PRACTICE GYMNASIUM BUILDING SECTION SCALE: 3/32"=1' 3



BLDG 7. CLASSROOM BUILDING SECTION SCALE: 3/32"=1' 2



BLDG 2. CAFETERIA / BANQUET HALL SECTION SCALE: 3/32"=1' 1

All ideas, designs, arrangements, and plans indicated or represented by these drawings are owned by and are the property of Corsini Stark Architects, LLP and were created, evolved, and developed for use on, and in connection with the specified project. None of such ideas, designs, arrangements, or plans shall be used by or disclosed to any person, firm, or corporation, without the written permission of Corsini Stark Architects, LLP.

PROFESSIONAL SEAL:

ARCHITECT:
CORSINI STARK ARCHITECTS
3630 TYBURN STREET
LOS ANGELES, CA 90065
P: 323.255.9100
CONTACT: ANTHONY STARK, RA

#	SUBMISSIONS / REVISIONS	DATE

PROJECT TITLE:
**NOTRE DAME HIGH SCHOOL
CAMPUS PLAN**

13645 RIVERSIDE DRIVE
SHERMAN OAKS, CA 91423

DRAWING TITLE:
SECTIONS

DRAWING NUMBER:

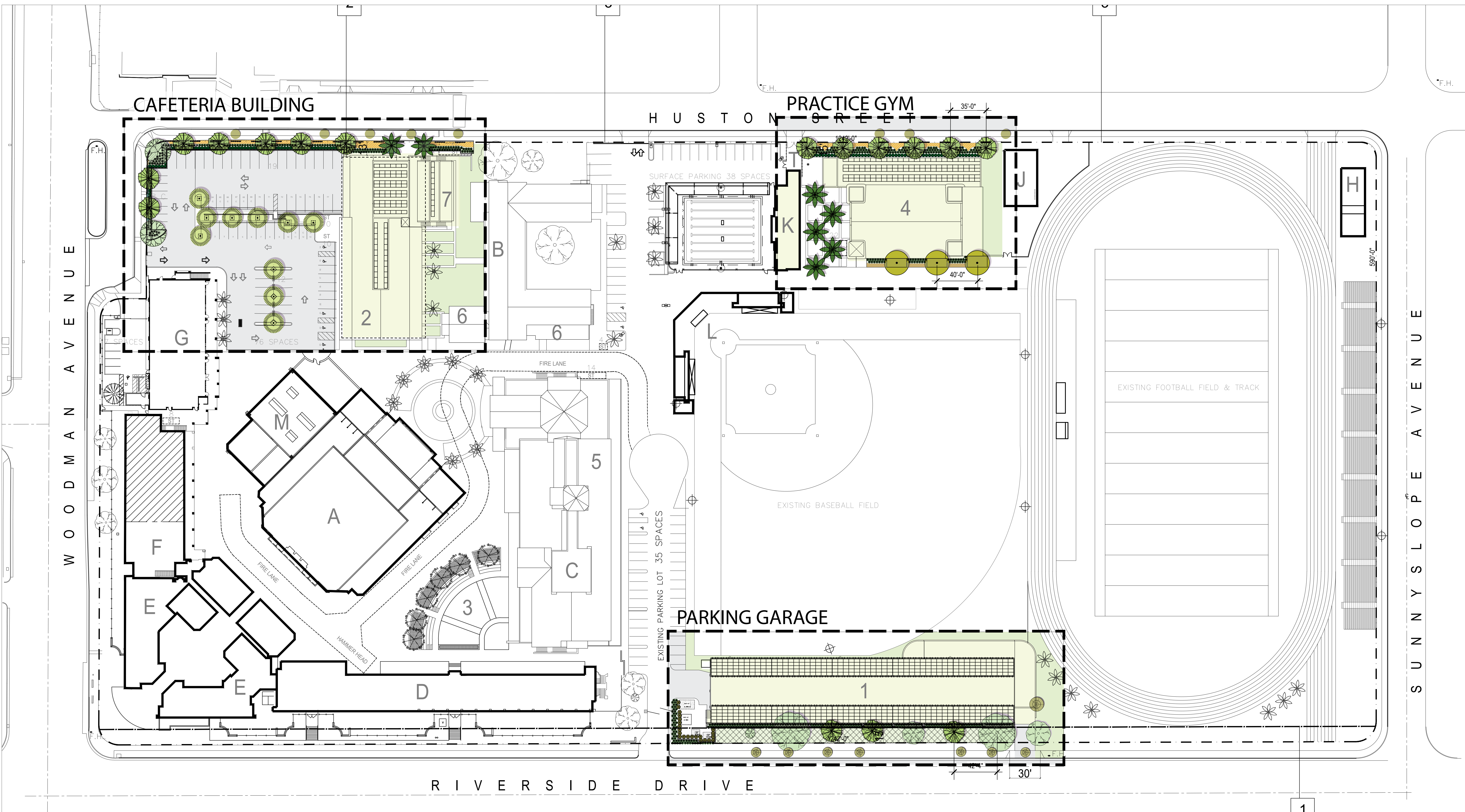
A 4.02

PROJECT 17.002.00



BLDG 1. RIVERSIDE PARKING STURCTURE SECTION

SCALE:
3/32"=1'



PROJECT
NOTRE DAME HIGH SCHOOL
13645 RIVERSIDE DRIVE
SHERMAN OAKS, CALIFORNIA

PROJECT ID
1818.00

superjacent
LANDSCAPE ARCHITECTURE - URBAN DESIGN
www.superjacent.com



REVISIONS
ISSUED FOR
FINAL ENTITLEMENT APPLICATION

REVISIONS

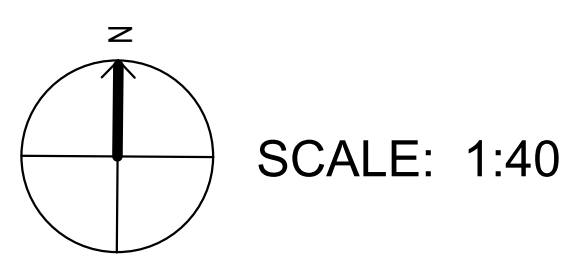
KEY PLAN

DRAWING TITLE
PROPOSED LANDSCAPE PLAN

DATE
JULY 16, 2018

SCALE
1:40

DRAWING NUMBER
L1.01



TREE SUMMARY

	ON-SITE TREES	STREET TREES	TOTAL TREES
EXISTING TREES	10	15	25
TREES TO BE REMOVED	<13>	<0>	<13>
PROPOSED NEW TREES	29	0	29
TOTAL TREES	26	15	41

PROTECTED TREES
I HAVE PERSONALLY INSPECTED ALL EXISTING TREES ON THE SITE ON JUNE 1, 2018 AND FOUND THAT NONE ARE PROTECTED SPECIES OF THE GENUS QUERCUS (OAK) NOR ARE ANY OF THE EXISTING TREES CALIFORNIA BLACK WALNUT (JUGLANDS CALIFORNIA), CALIFORNIA SYCAMORE (PLATANUS RACEMOSA), OR CALIFORNIA BAY (UMBELLULARIA CALIFORNIA).

TONY PARADOWSKI
CALIFORNIA REGISTERED LANDSCAPE ARCHITECT #6087



- LANDSCAPE ASSOCIATED WITH BUILDING, NOT PART OF STREETScape PROJECT.
- MELALEUCA QUINQUENARIA PAPERBARK TREE 24" BOX WUCOLS LOW WATER USE
- PODOCARPUS MACROPHYLLUS 'MAKI' SHRUBBY YEW PODOCARPUS 5 GALLON WUCOLS MODERATE WATER USE
- EXISTING STREET TREE TO REMAIN
- CERCIDIUM X 'DESERT MUSEUM' DESERT MUSEUM PALOS VERDE 24" BOX WUCOLS VERY LOW WATER USE
- LEYMUS CONDENSATUS WILD RYE 1 GALLON WUCOLS LOW WATER USE
- EXISTING TREE TO REMAIN
- OLEA EUROPAEA 'SWAN HILL' OLIVE TREE 36" BOX WUCOLS LOW WATER USE
- LANTANA X 'NEW GOLD' NEW GOLD LANTANA 1 GALLON WUCOLS LOW WATER USE
- OLEA EUROPAEA 'SWAN HILL' SWAN HILL OLIVE 5 GALLON WUCOLS LOW WATER USE
- PHOENIX CANARIENSIS CANARY ISLAND DATE PALM 36" BOX WUCOLS LOW WATER USE
- SENECIO SERPENS BLUE CHALKSTICKS FLAT WUCOLS LOW WATER USE