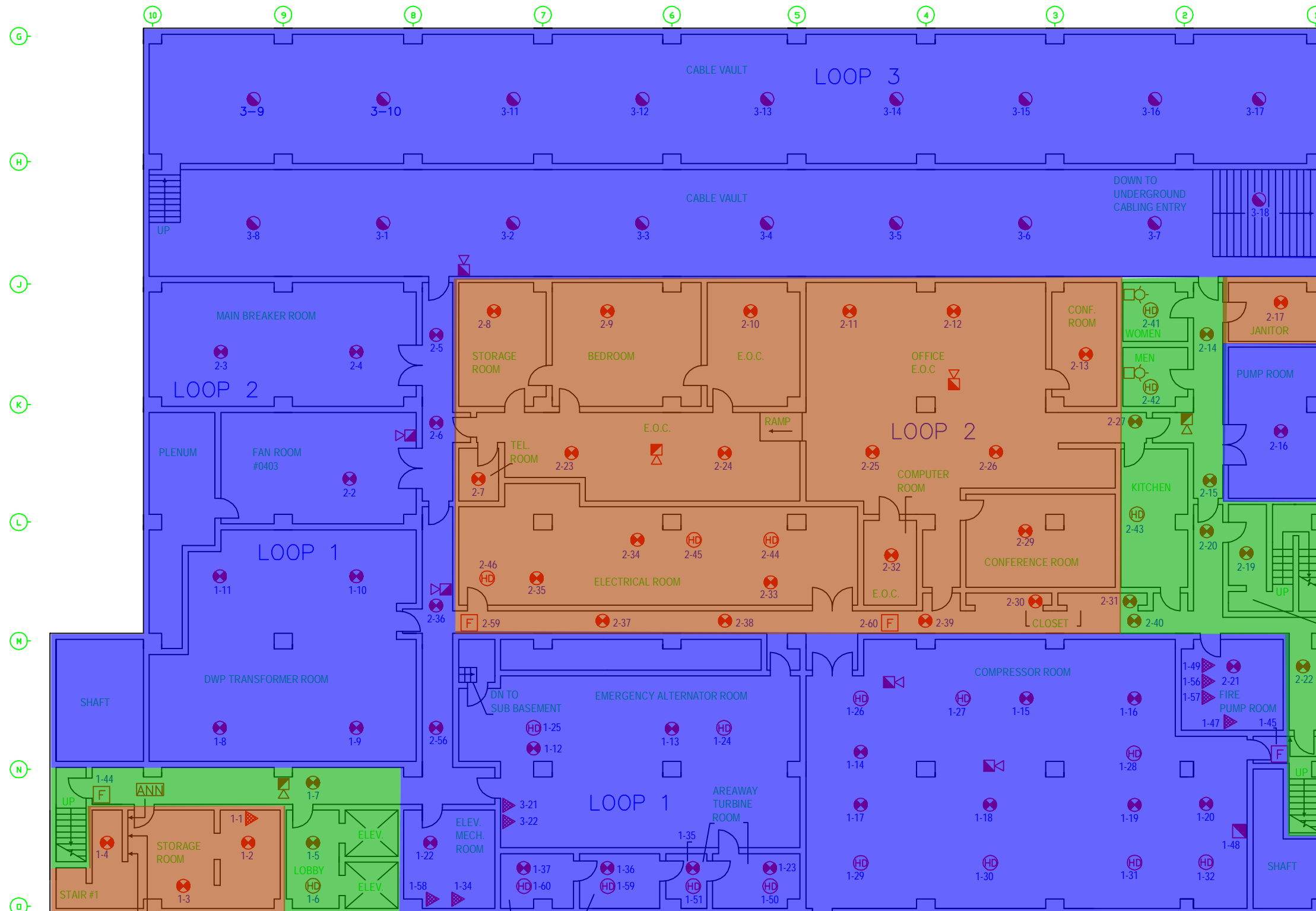




14800 VENTURA BLVD.
SHERMAN OAKS
CALIFORNIA



SYMBOL LEGEND

- SMOKE DETECTOR (ION)
- SMOKE DETECTOR (ION) ABOVE CEILING
- SMOKE DETECTOR (PHOTO)
- HEAT DETECTOR
- MANUAL PULL STATION
- FLAME DETECTOR
- DUCT DETECTOR
- WATER FLOW SWITCH
- TAMPER SWITCH
- FIRE ALARM CONTROL PANEL
- ANNUNCIATOR
- PRE-ACTION PANEL
- INSPECTORS TEST VALVE
- TRI
- BELL
- HORN/STROBE
- STROBE

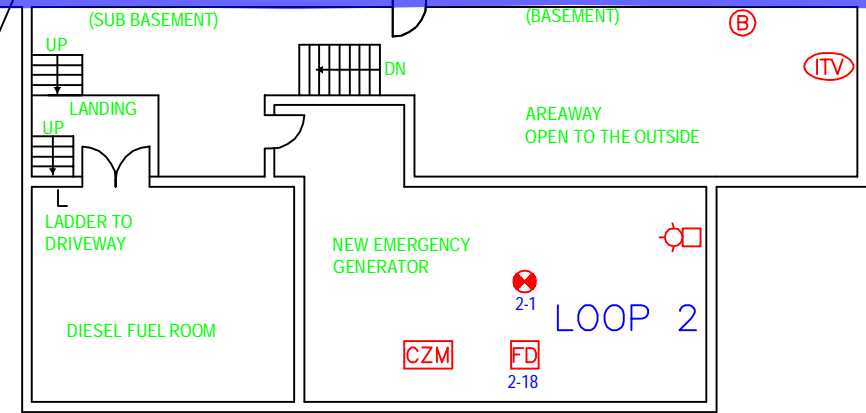
TELE/EQUIP SPACE

OFFICE SPACE

STORAGE SPACE

CIRCULATION/RESTROOMS/ MISC SPACE

BASEMENT FLOOR FIRE ALARM PLAN



(818) 767-FIRE
FIRE DETECTION
FIRE-LIFE-SAFETY

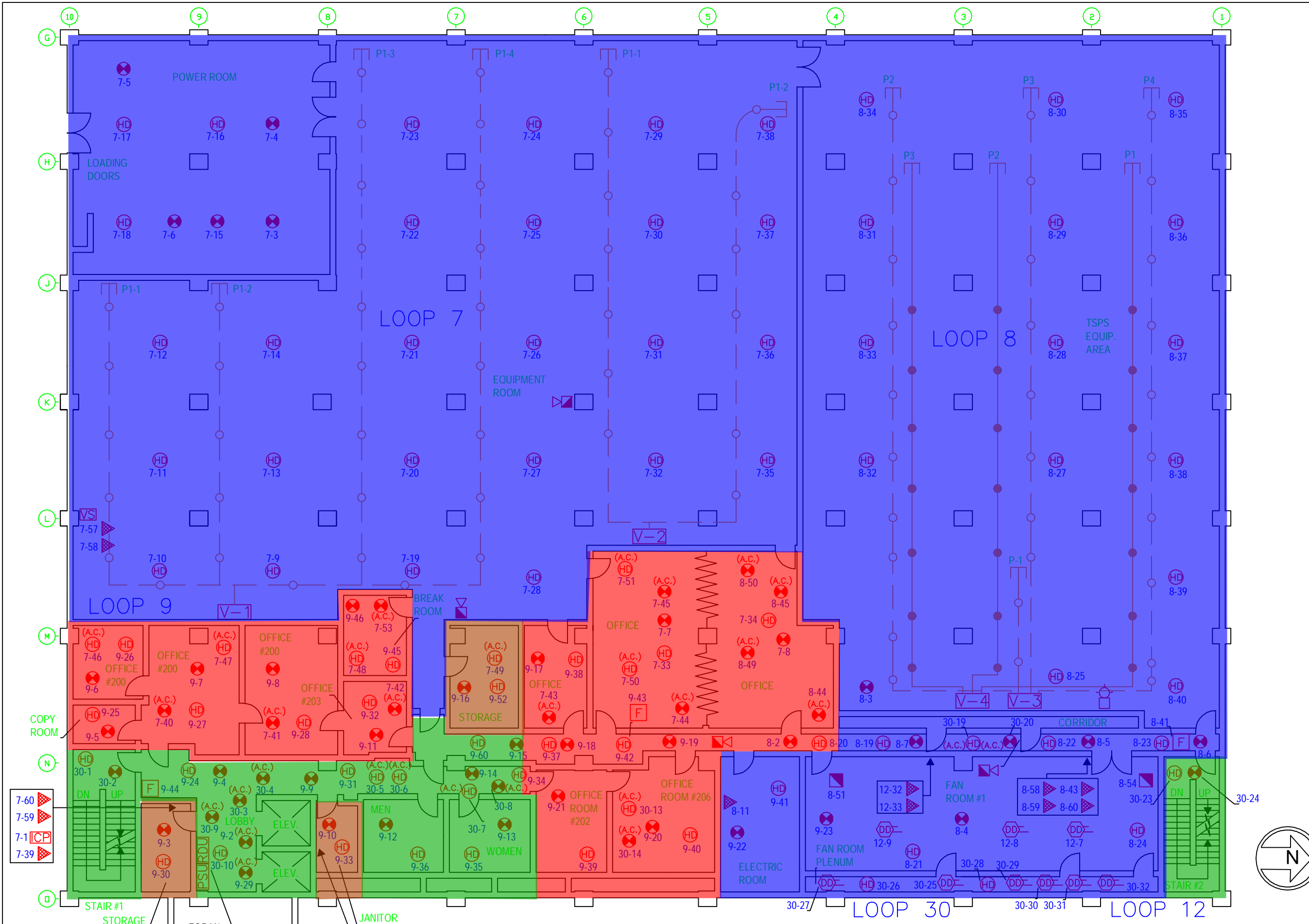
DATE/BY: 9/3/09 PL
FILE: V010-14800
PAGE: B.DWG



14800 VENTURA BLVD.
SHERMAN OAKS
CALIFORNIA

SYMBOL LEGEND

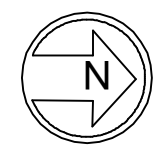
- VESDA DETECTOR
- VESDA POWER SUPPLY
- VESDA BATTERIES
- RETURN AIR GRILLE
- OVERHEAD VESDA
- UNDER FLOOR VESDA
- SMOKE DETECTOR (ION)
- SMOKE DETECTOR (ION) ABOVE CEILING
- SMOKE DETECTOR (PHOTO)
- HEAT DETECTOR
- MANUAL PULL STATION
- FLAME DETECTOR
- DUCT DETECTOR
- WATER FLOW SWITCH
- TAMPER SWITCH
- FIRE ALARM CONTROL PANEL
- ANNUNCIATOR
- INSPECTORS TEST VALVE
- TRI
- BELL
- HORN/STROBE
- STROBE



-
-
-
-

-
-
-
-

SECOND FLOOR FIRE & VESDA PLAN



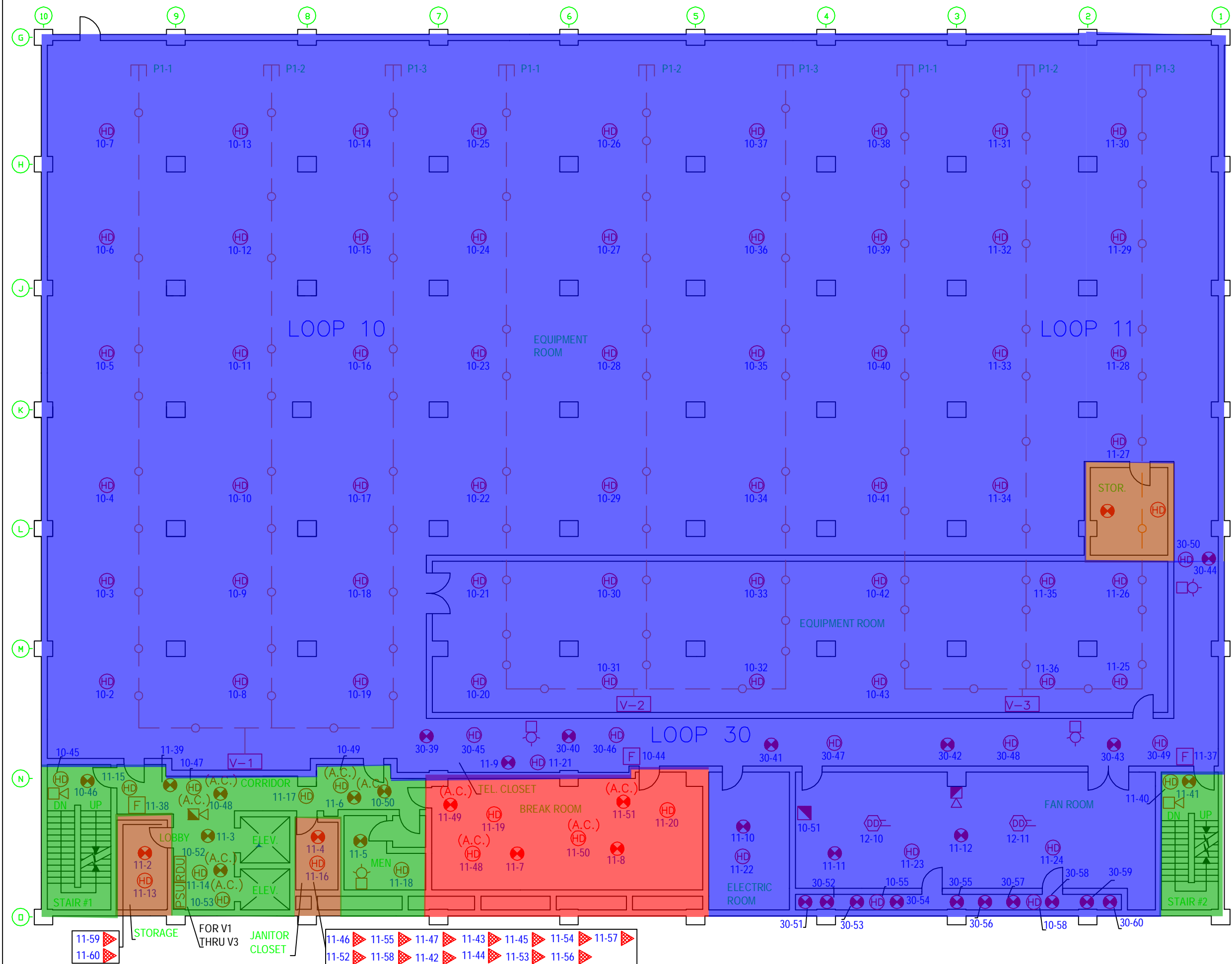
DATE/BY: 9/3/09 PL
FILE: V010-14800
PAGE: 2.DWG



14800 VENTURA BLVD.
SHERMAN OAKS
CALIFORNIA

SYMBOL LEGEND

- VESDA DETECTOR
- VESDA POWER SUPPLY
- VESDA BATTERIES
- RETURN AIR GRILLE
- OVERHEAD VESDA
- UNDER FLOOR VESDA
- SMOKE DETECTOR (ION)
- SMOKE DETECTOR (ION) ABOVE CEILING
- SMOKE DETECTOR (PHOTO)
- HEAT DETECTOR
- MANUAL PULL STATION
- FLAME DETECTOR
- DUCT DETECTOR
- WATER FLOW SWITCH
- TAMPER SWITCH
- FIRE ALARM CONTROL PANEL
- ANNUNCIATOR
- INSPECTORS TEST VALVE
- TRI
- BELL
- HORN/SSTROBE
- STROBE



- 11-59
- 11-60
- 11-46
- 11-52
- 11-55
- 11-58
- 11-47
- 11-42
- 11-43
- 11-44
- 11-45
- 11-53
- 11-54
- 11-56
- 11-57

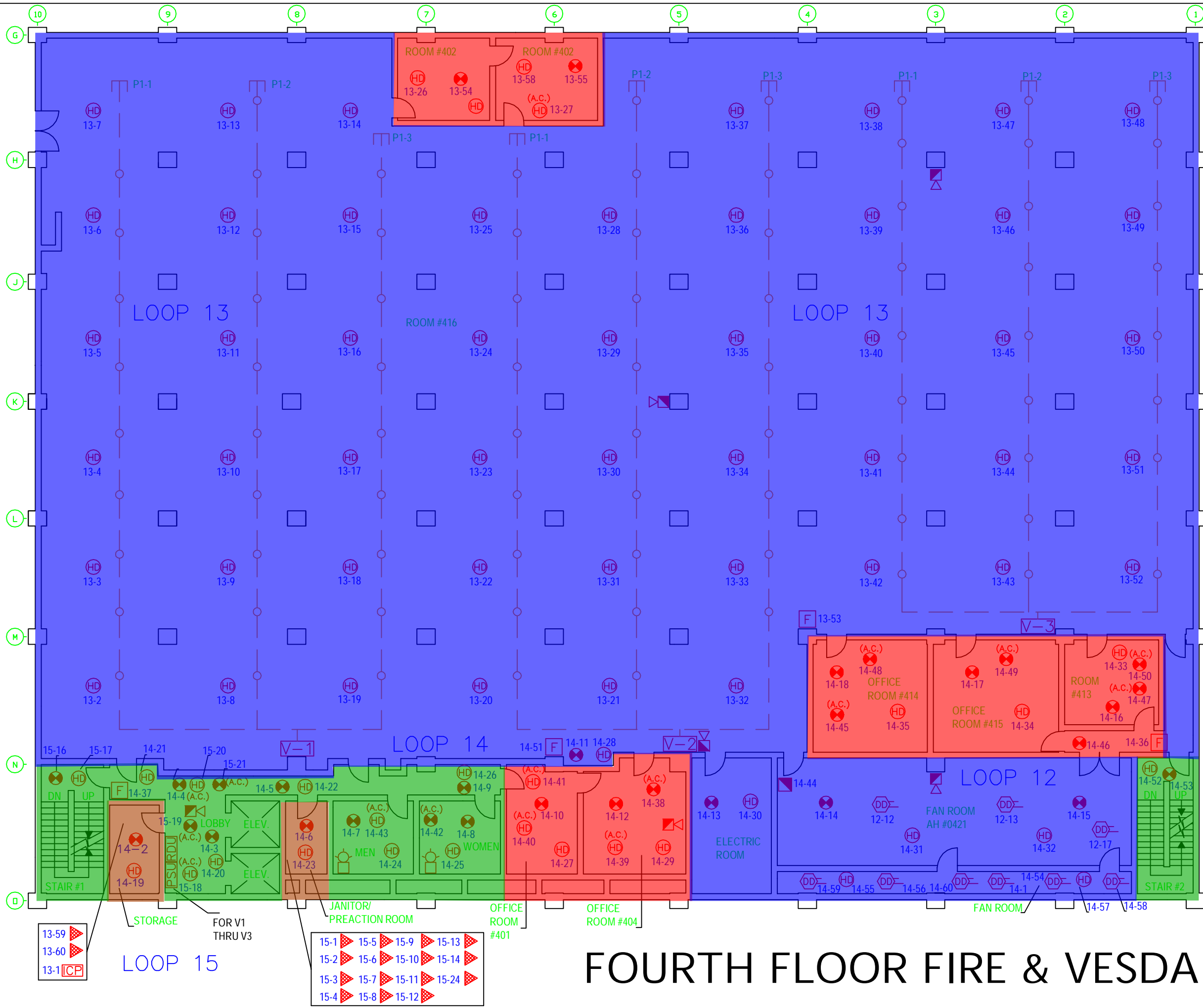
THIRD FLOOR FIRE & VESDA PLAN



DATE/BY: 9/3/09 PL
FILE: V010-14800
PAGE: 3.DWG

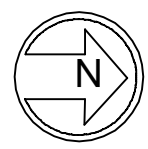


14800 VENTURA BLVD.
SHERMAN OAKS
CALIFORNIA



SYMBOL LEGEND

	VESDA DETECTOR
	VESDA POWER SUPPLY
	VESDA BATTERIES
	RETURN AIR GRILLE
	OVERHEAD VESDA
	UNDER FLOOR VESDA
	SMOKE DETECTOR (ION)
	SMOKE DETECTOR (ION) ABOVE CEILING
	SMOKE DETECTOR (PHOTO)
	HEAT DETECTOR
	MANUAL PULL STATION
	FLAME DETECTOR
	DUCT DETECTOR
	WATER FLOW SWITCH
	TAMPER SWITCH
	FIRE ALARM CONTROL PANEL
	ANNUNCIATOR
	INSPECTORS TEST VALVE
	TRI
	BELL
	HORN/STROBE
	STROBE



FOURTH FLOOR FIRE & VESDA PLAN

DATE/BY: 9/3/09 PL
FILE: V010-14800
PAGE: 4.DWG

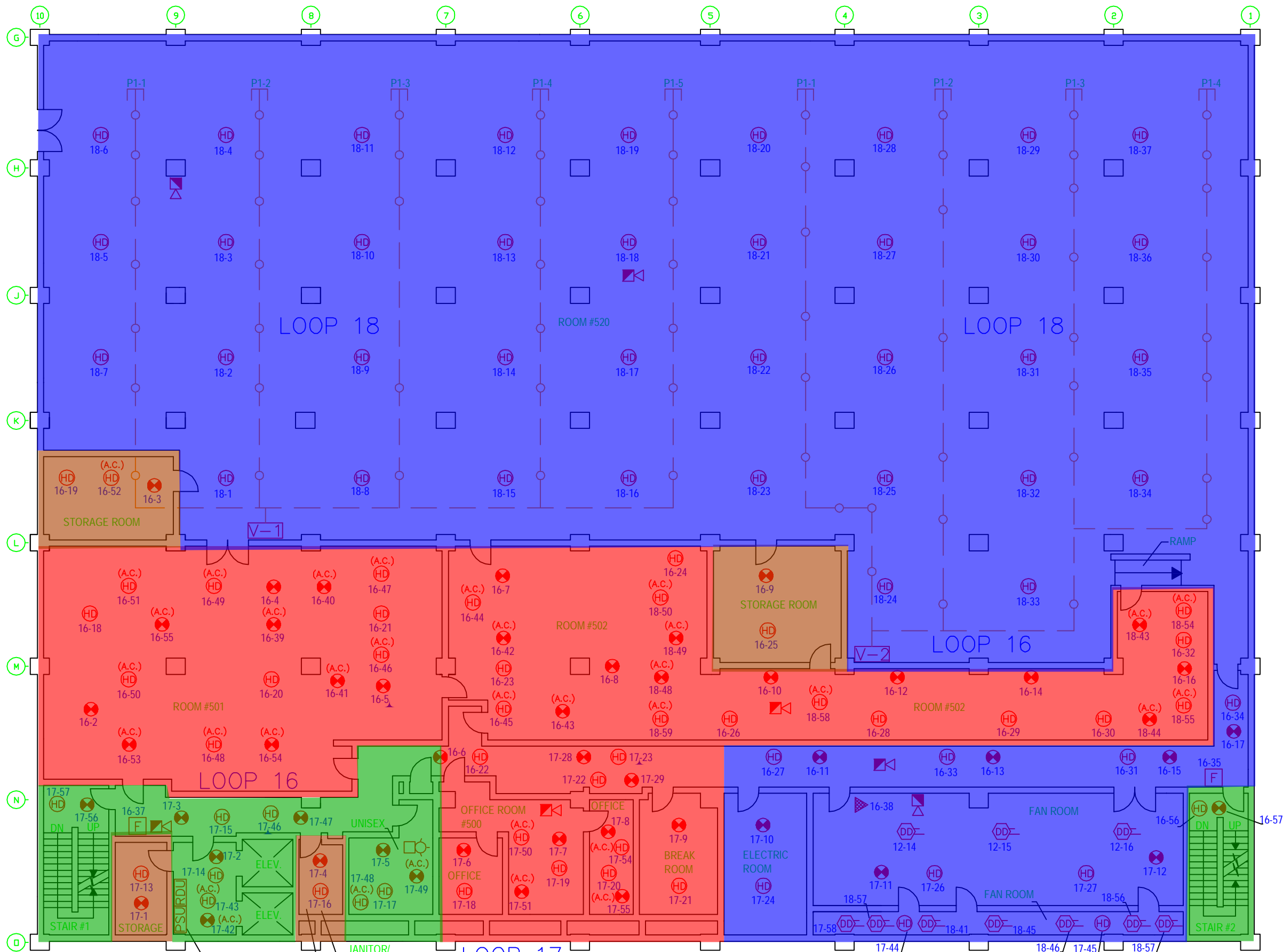
13-59	▶	15-1	▶	15-9	▶	15-13	▶
13-60	▶	15-2	▶	15-6	▶	15-10	▶
13-1 ICP	▶	15-3	▶	15-7	▶	15-11	▶
		15-4	▶	15-8	▶	15-12	▶



14800 VENTURA BLVD.
SHERMAN OAKS
CALIFORNIA

SYMBOL LEGEND

- VESDA DETECTOR
- VESDA POWER SUPPLY
- VESDA BATTERIES
- RETURN AIR GRILLE
- OVERHEAD VESDA
- UNDER FLOOR VESDA
- SMOKE DETECTOR (ION)
- SMOKE DETECTOR (ION) ABOVE CEILING
- SMOKE DETECTOR (PHOTO)
- HEAT DETECTOR
- MANUAL PULL STATION
- FLAME DETECTOR
- DUCT DETECTOR
- WATER FLOW SWITCH
- TAMPER SWITCH
- FIRE ALARM CONTROL PANEL
- ANNUNCIATOR
- INSPECTORS TEST VALVE
- TRI
- BELL
- HORN/SSTROBE
- STROBE

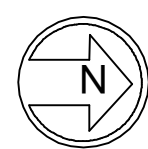


16-1 ICP
16-59
16-60

FOR V1 & V2

17-30 17-33 17-36 17-39
17-31 17-34 17-37 17-40
17-32 17-35 17-38 17-41
17-25

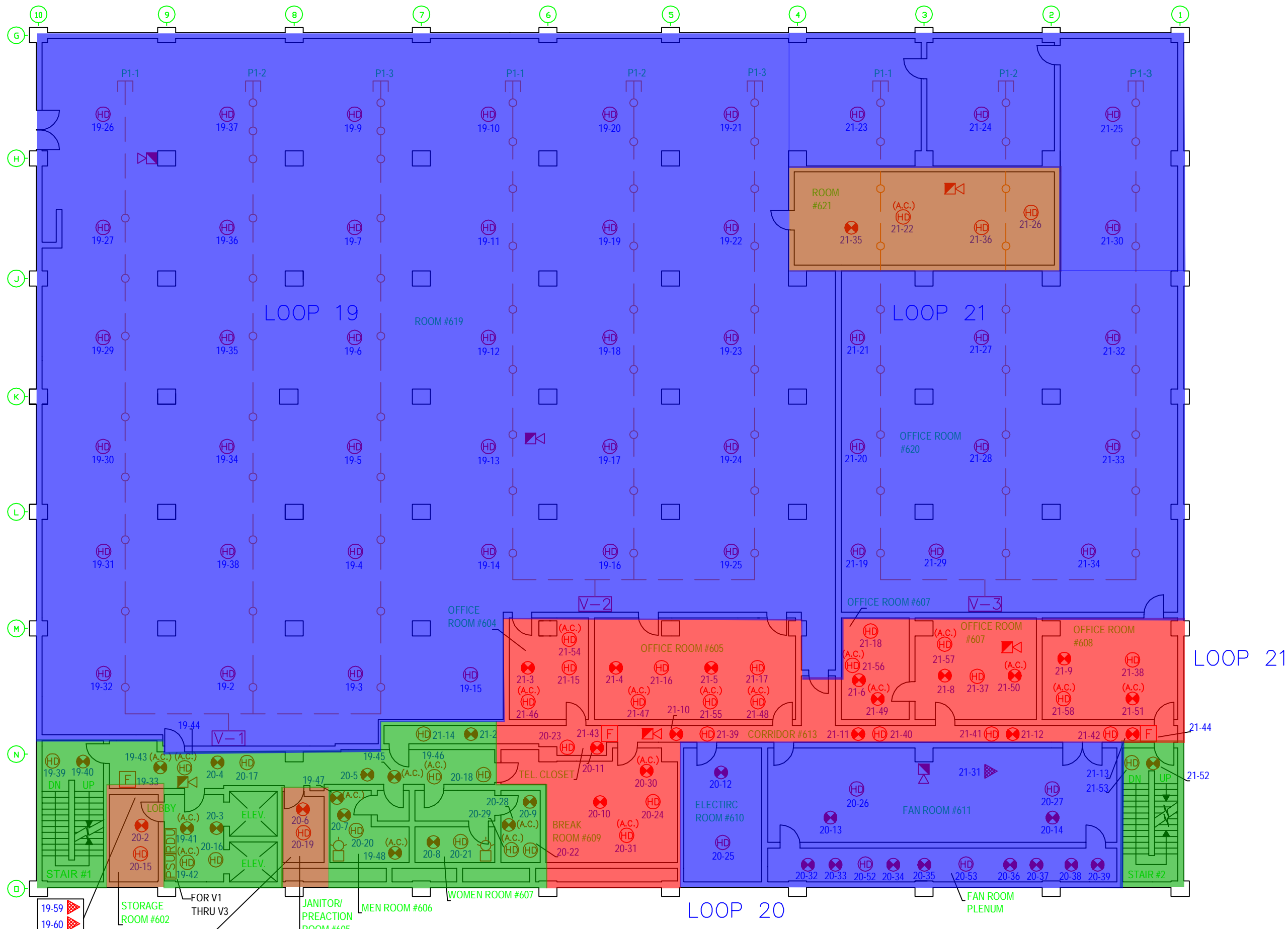
FIFTH FLOOR FIRE & VESDA PLAN



DATE/BY: 9/3/09 PL
FILE: V010-14800
PAGE: 5.DWG



14800 VENTURA BLVD.
SHERMAN OAKS
CALIFORNIA



SYMBOL LEGEND

	VESDA DETECTOR
	VESDA POWER SUPPLY
	VESDA BATTERIES
	RETURN AIR GRILLE
	OVERHEAD VESDA
	UNDER FLOOR VESDA
	SMOKE DETECTOR (ION)
	SMOKE DETECTOR (ION) ABOVE CEILING
	SMOKE DETECTOR (PHOTO)
	HEAT DETECTOR
	MANUAL PULL STATION
	FLAME DETECTOR
	DUCT DETECTOR
	WATER FLOW SWITCH
	TAMPER SWITCH
	FIRE ALARM CONTROL PANEL
	ANNUNCIATOR
	INSPECTORS TEST VALVE
	TRI
	BELL
	HORN/STROBE
	STROBE

LOOP 20

19-59	19-60	19-1 [CP]
20-40	20-44	20-48
20-41	20-45	20-49
20-42	20-46	20-50
20-43	20-47	20-51
		20-54

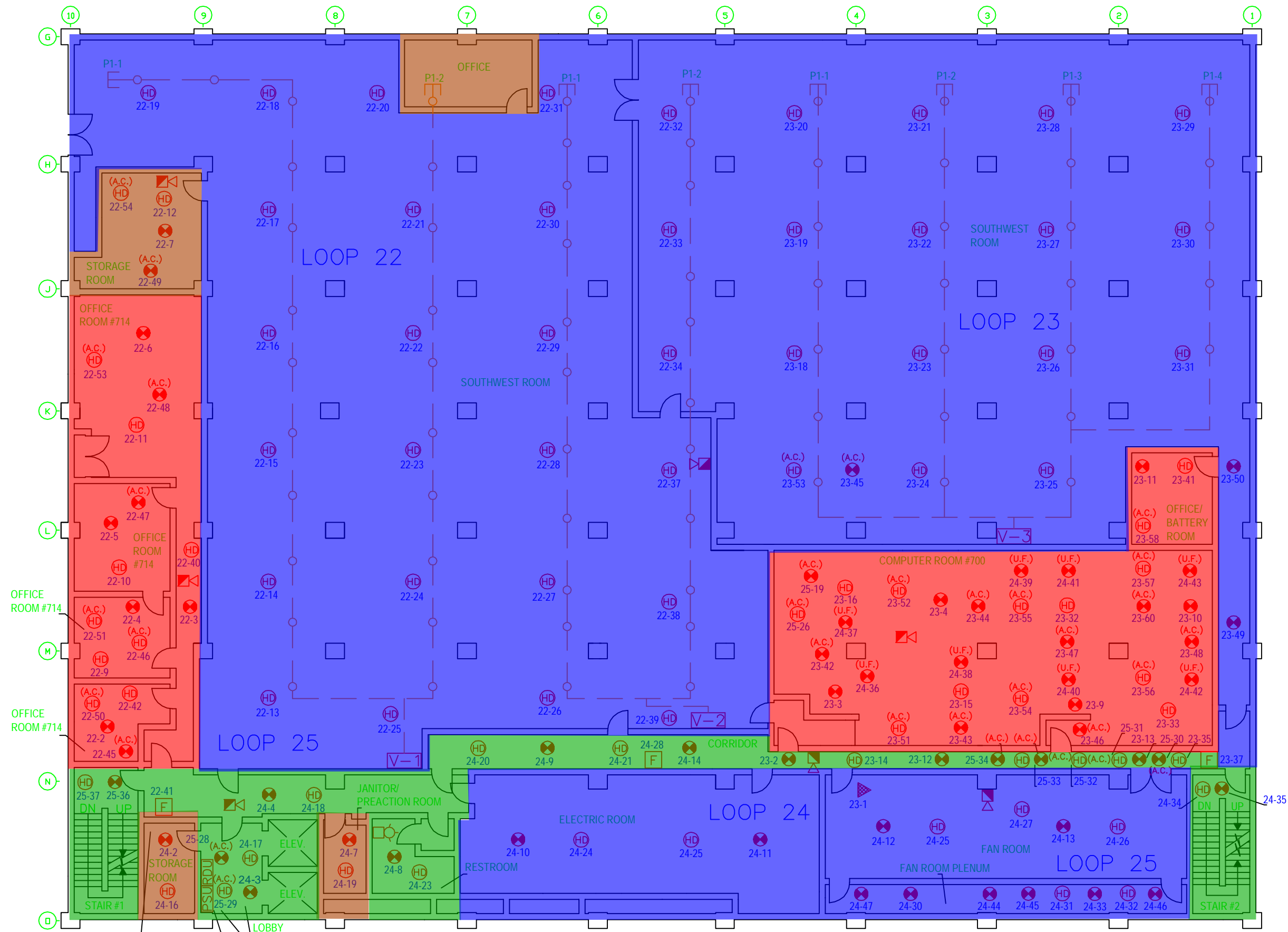
SIXTH FLOOR FIRE & VESDA PLAN



DATE/BY: 9/3/09 PL
FILE: V010-14800
PAGE: 6.DWG



14800 VENTURA BLVD.
SHERMAN OAKS
CALIFORNIA



SYMBOL LEGEND

- VESDA DETECTOR
- VESDA POWER SUPPLY
- VESDA BATTERIES
- RETURN AIR GRILLE
- OVERHEAD VESDA
- UNDER FLOOR VESDA
- SMOKE DETECTOR (ION)
- SMOKE DETECTOR (ION) ABOVE CEILING
- SMOKE DETECTOR (PHOTO)
- HEAT DETECTOR
- MANUAL PULL STATION
- FLAME DETECTOR
- DUCT DETECTOR
- WATER FLOW SWITCH
- TAMPER SWITCH
- FIRE ALARM CONTROL PANEL
- ANNUNCIATOR
- INSPECTORS TEST VALVE
- TRI
- BELL
- HORN/SSTROBE
- STROBE

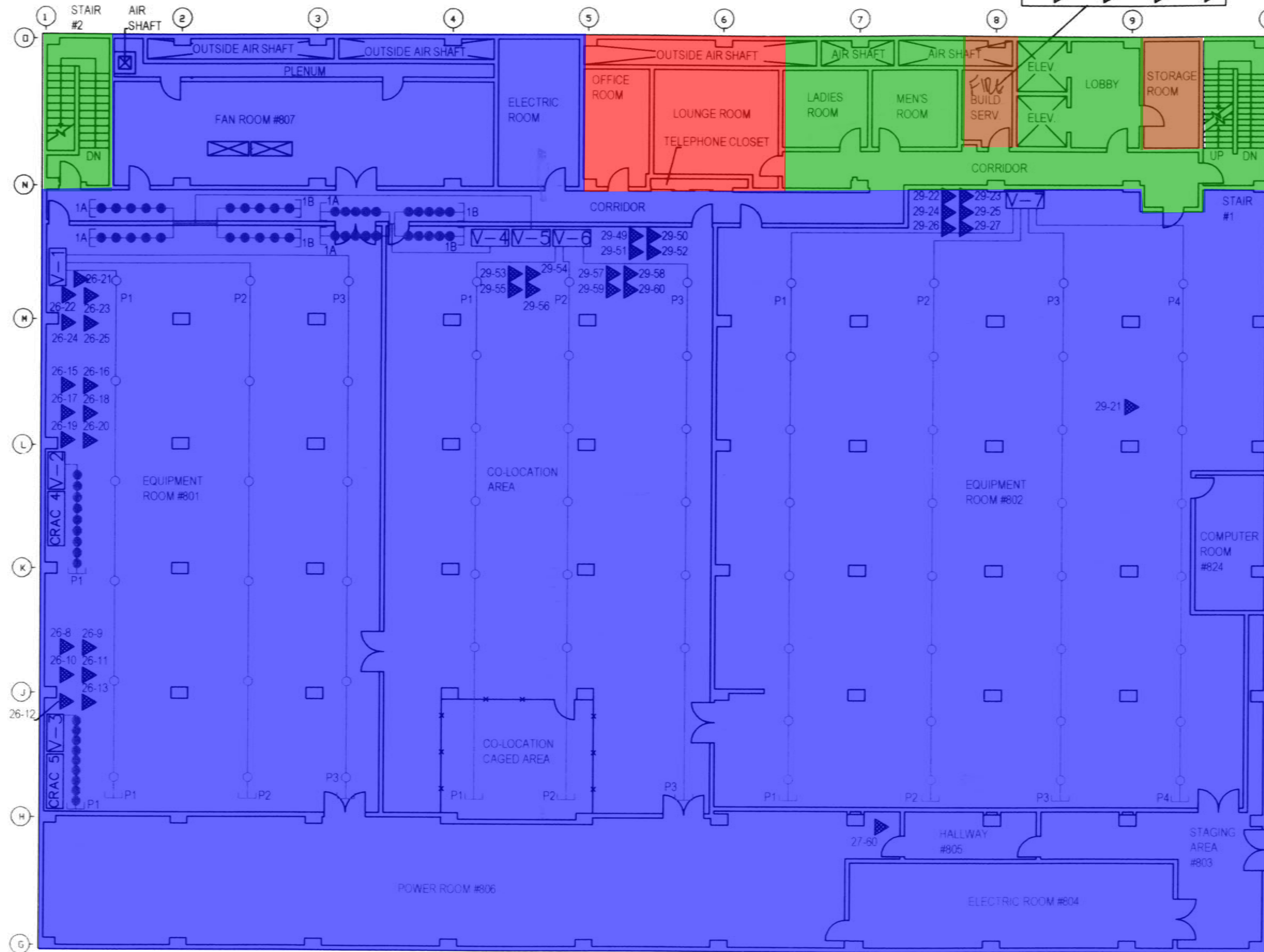
22-1	25-2	25-5	25-8	25-11	25-14
22-59	25-3	25-6	25-9	25-12	
22-60	25-4	25-7	25-10	25-13	

FOR V1 THRU V3

SEVENTH FLOOR FIRE & VESDA PLAN



DATE/BY: 9/3/09 PL
FILE: V010-14800
PAGE: 7.DWG



SYMBOL LEGEND

	FIRE ALARM CONTROL PANEL
	ANNUNCIATOR
	VESDA DETECTOR
	VESDA POWER SUPPLY
	BATTERIES
	OVERHEAD VESDA
	RETURN AIR VESDA
	SMOKE DETECTOR (ION)
	SMOKE DETECTOR (ION) ABOVE CEILING
	SMOKE DETECTOR (PHOTO)
	HEAT DETECTOR
	HEAT DETECTOR ABOVE CEILING
	MANUAL PULL STATION
	FLAME DETECTOR
	DUCT DETECTOR
	WATER FLOW SWITCH
	TAMPER SWITCH
	INSPECTORS TEST VALVE
	POWER BOOSTER
	PRE-ACTION PANEL
	REMOTE DISPLAY UNIT
	TRI
	BELL
	HORN/STROBE
	HORN
	STROBE

EIGHTH FLOOR VESDA PLAN